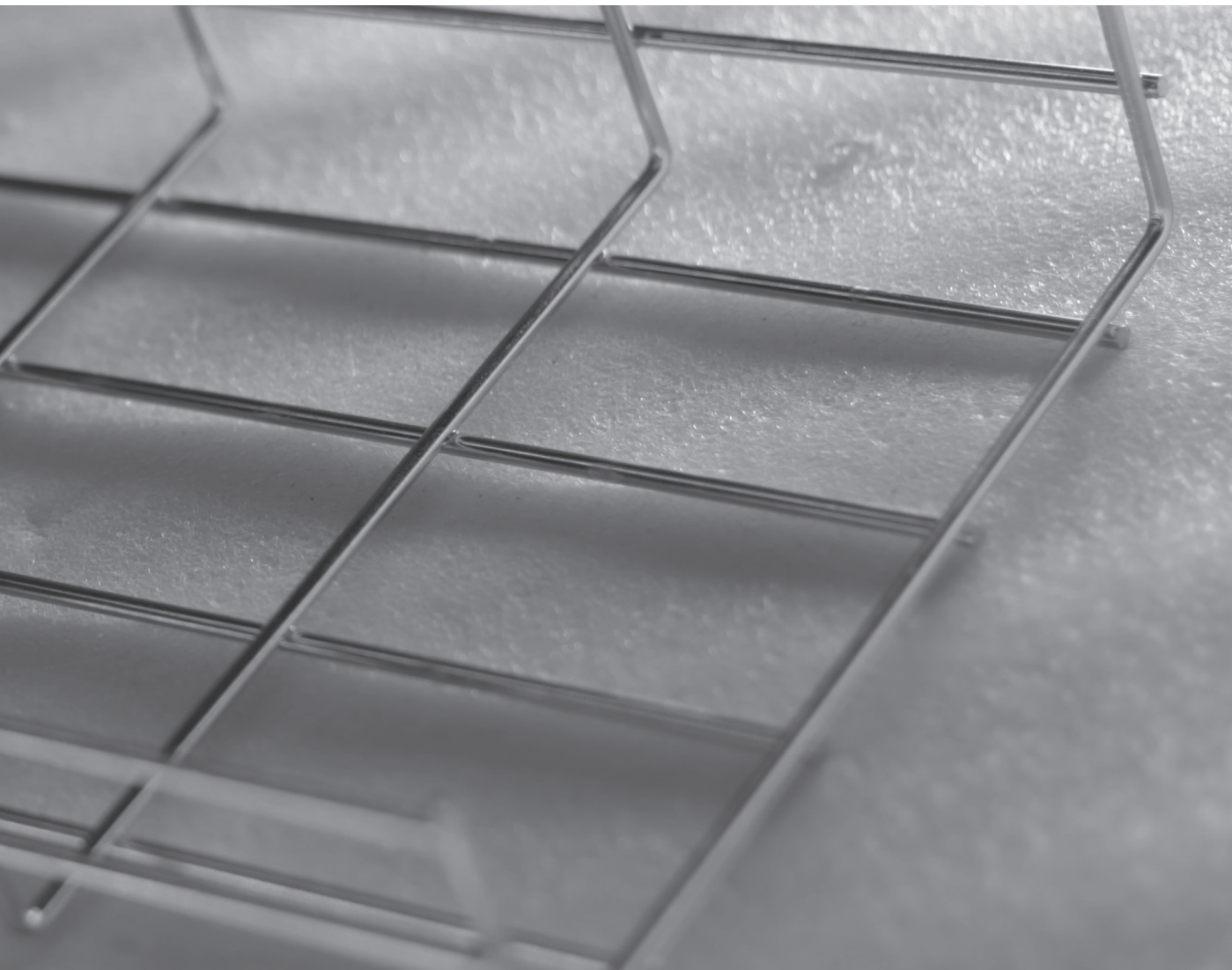




E-LINE TLS

MESH WIRE CABLE TRAY



TLS

E-LINE TLS

Please visit our website for the updated version of our catalogues.
www.eaeelectric.com

CONTENTS

▶▶ E-LINE TLS

Wire Mesh Trays	2-6
Application Examples	7
TLS Single Rod Z-Holder	8
TLS Snap-On U-Profile	9
TLS Snap-on Omega-Profile	10
TLS Omega-Duct Carrier	11
TLS V Duct Carrier.....	12
TLS Fixing Unit	13
TLS Landing Plate.....	14
TLS Mounting Plate	15
TLS Union Outlet Element, TLS Separator	16
Slotted Straight Strip, TLS Slotted L-Strip.....	17
TLS Fixture Holder.....	18
Wire Mesh Side Dropout Bend	19
Wire Mesh Side Dropout Bend	20
Wire Mesh Bottom Dropout Bend	21
TLS Cover, Cover Clamps	22
TLS Mesh Level Adaptation Bend	23
Wire Mesh Tabbed Earthing Connector	24
Earthing Components	25
Application Examples	26-32
Bend Application Examples	33-34

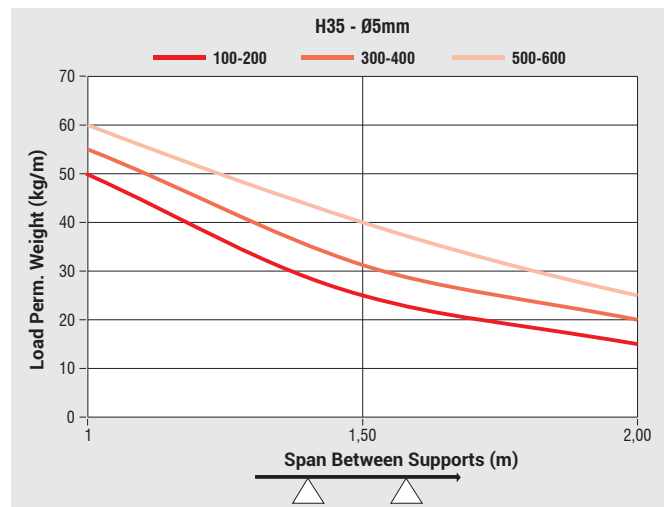
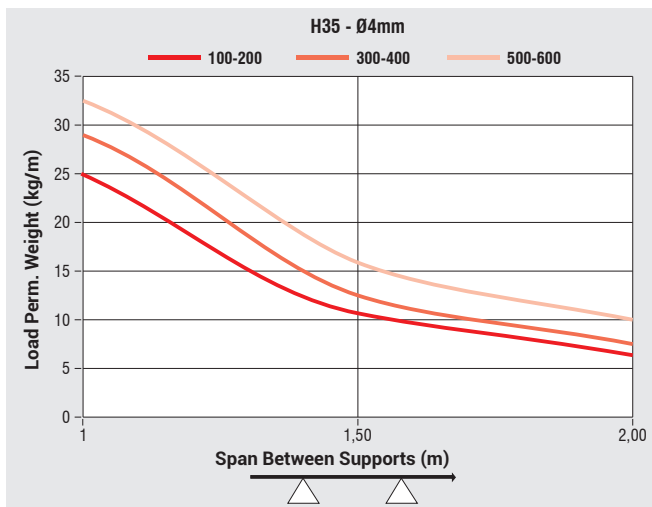
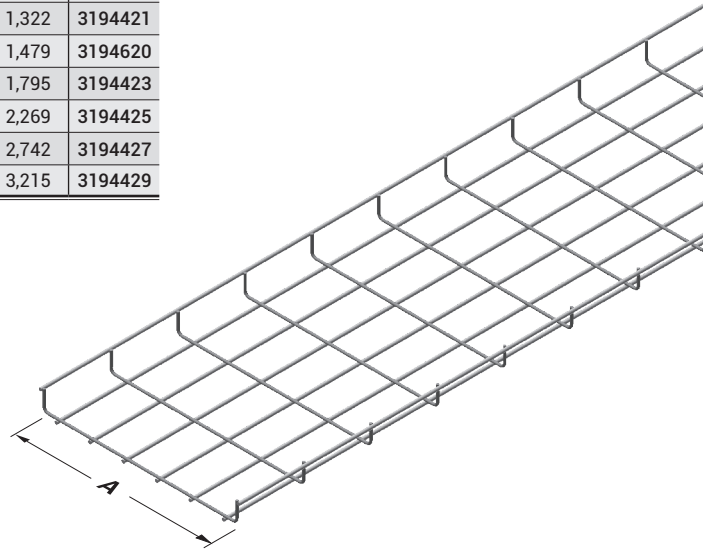
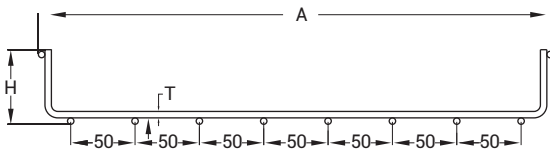
E-LINETLS

►► WIRE MESH TRAYS

Electrogalvanized (TS 149), Hot Dip Galvanized (TS EN ISO 1461), Stainless Steel (SS304 -SS316)



Description	H (mm)	A (mm)	T (mm)	Weight (kg/m)	EG Code	Weight (kg/m)	HDG Code	Weight (kg/m)	SS Code
035 TLS 050	35	50	4	0,289	3187808	0,303	3322530	0,293	3194417
035 TLS 100	35	100	4	0,538	3178496	0,565	3322531	0,546	3194418
035 TLS 150	35	150	4	0,688	3194605	0,723	3322532	0,698	3194616
035 TLS 200	35	200	4	0,838	3178497	0,880	3322533	0,850	3194420
035 TLS 250	35	250	4	0,989	3194606	1,038	3322534	1,003	3194619
035 TLS 300	35	300	4	1,139	3178498	1,196	3322535	1,155	3194422
035 TLS 400	35	400	4	1,439	3178499	1,511	3322536	1,459	3194424
035 TLS 500	35	500	4	1,739	3178500	1,826	3322537	1,763	3194426
035 TLS 600	35	600	4	2,040	3178501	2,142	3322538	2,068	3194428
035 TLS 100	35	100	5	0,837	3178521	0,879	3322554	0,849	3194419
035 TLS 150	35	150	5	1,071	3194599	1,124	3322555	1,086	3194618
035 TLS 200	35	200	5	1,304	3178522	1,370	3322556	1,322	3194421
035 TLS 250	35	250	5	1,458	3194600	1,531	3322557	1,479	3194620
035 TLS 300	35	300	5	1,771	3178523	1,860	3322558	1,795	3194423
035 TLS 400	35	400	5	2,239	3178524	2,351	3322559	2,269	3194425
035 TLS 500	35	500	5	2,706	3178525	2,841	3322560	2,742	3194427
035 TLS 600	35	600	5	3,173	3178526	3,332	3322561	3,215	3194429



■ Load Perm. Weight may change +/- according to the sheet tolerance and hardness. Please contact to your customer representative for detailed information.

■ Please contact your representative for inquiries regarding stainless steel alternatives.

■ Please indicate order code in your orders.

■ Please contact us for special dimensions.

■ Material weights may vary by ± 10%

■ All dimensions are given as in mm

■ EG= Electrogalvanized

■ PG= Pre-Galvanized

■ SS= Stainless Steel

■ HDG= Hot Dip Galvanized

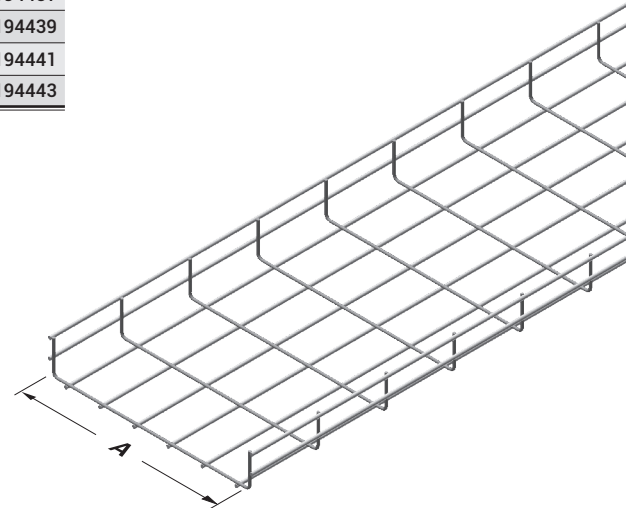
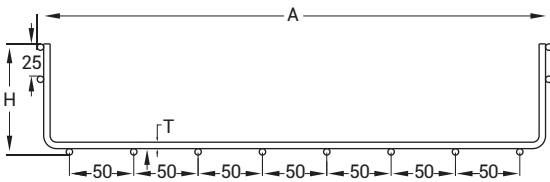
E-LINETLS

►► WIRE MESH TRAYS

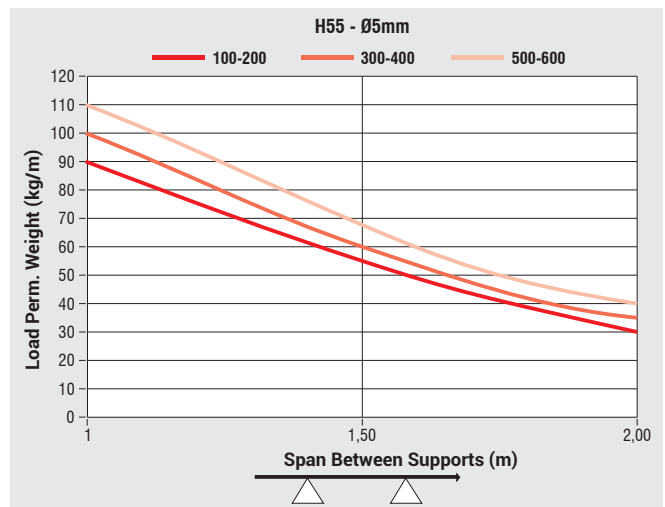
Electrogalvanized (TS 149), Hot Dip Galvanized (TS EN ISO 1461), Stainless Steel (SS304 - SS316)



Description	H (mm)	A (mm)	T (mm)	Weight (kg/m)	EG Code	Weight (kg/m)	HDG Code	Weight (kg/m)	SS Code
055 TLS 100	55	100	4	0,777	3178502	0,816	3322539	0,789	3194431
055 TLS 150	55	150	4	0,927	3188207	0,974	3322540	0,941	3194433
055 TLS 200	55	200	4	1,077	3178503	1,131	3322541	1,093	3194434
055 TLS 250	55	250	4	1,228	3194607	1,289	3322542	1,246	3194622
055 TLS 300	55	300	4	1,378	3178504	1,447	3322543	1,398	3194436
055 TLS 400	55	400	4	1,678	3178505	1,762	3322544	1,702	3194438
055 TLS 500	55	500	4	1,978	3178506	2,077	3322545	2,006	3194440
055 TLS 600	55	600	4	2,279	3178507	2,393	3322546	2,311	3194442
055 TLS 100	55	100	5	1,209	3178527	1,269	3322562	1,227	3194432
055 TLS 150	55	150	5	1,442	3194601	1,515	3322563	1,463	3194621
055 TLS 200	55	200	5	1,676	3178528	1,760	3322564	1,700	3194435
055 TLS 250	55	250	5	1,894	3194602	1,988	3322565	1,921	3194623
055 TLS 300	55	300	5	2,143	3178529	2,250	3322566	2,173	3194437
055 TLS 400	55	400	5	2,610	3178530	2,741	3322567	2,646	3194439
055 TLS 500	55	500	5	3,077	3178531	3,231	3322568	3,119	3194441
055 TLS 600	55	600	5	3,545	3178532	3,722	3322569	3,593	3194443



H=035, single row wire.
H=055, two rows wire.
H=100, three rows wire.



■ Load Perm. Weight may change +/- according to the sheet tolerance and hardness. Please contact to your customer representative for detailed information.

■ Please contact your representative for inquiries regarding stainless steel alternatives.

■ Please indicate order code in your orders.

■ Please contact us for special dimensions.

■ Material weights may vary by ± 10%

■ All dimensions are given as in mm

■ EG= Electrogalvanized

■ SS= Stainless Steel

■ PG= Pre-Galvanized

■ HDG= Hot Dip Galvanized

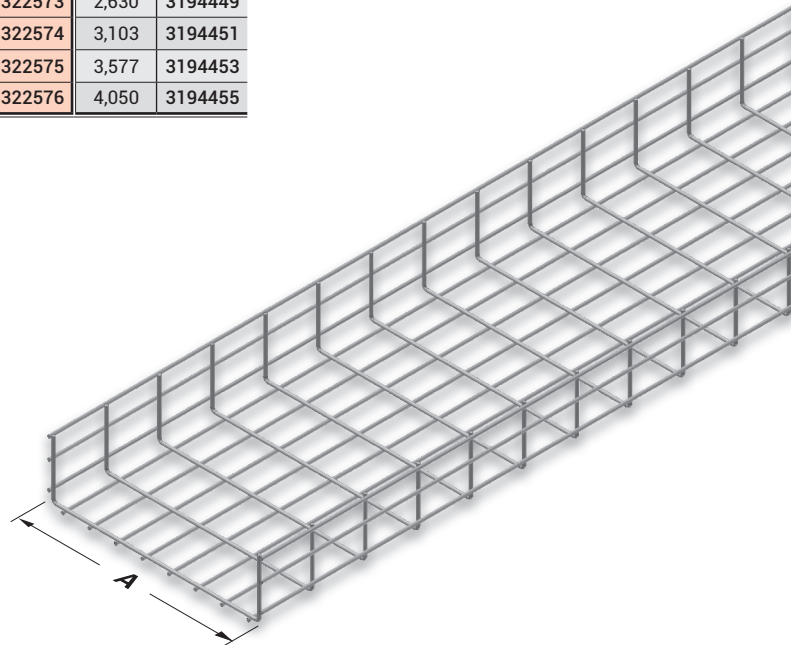
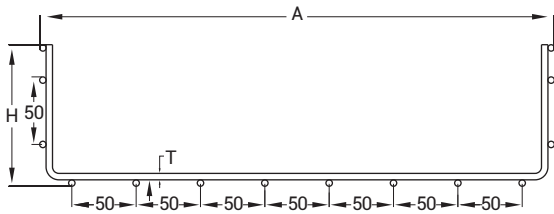
E-LINETLS

►► WIRE MESH TRAYS

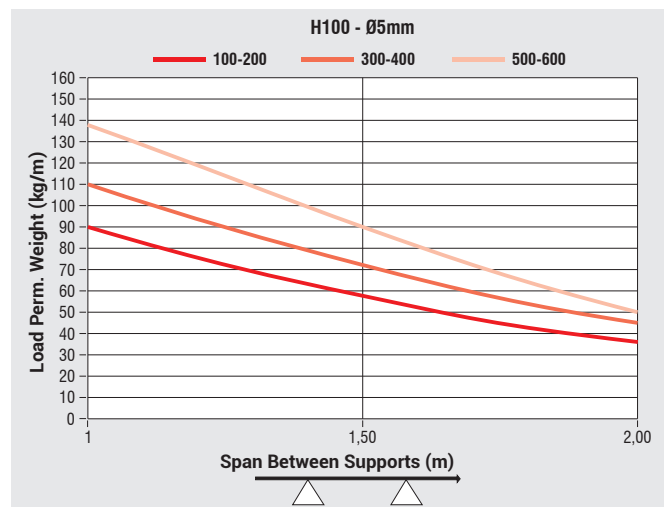
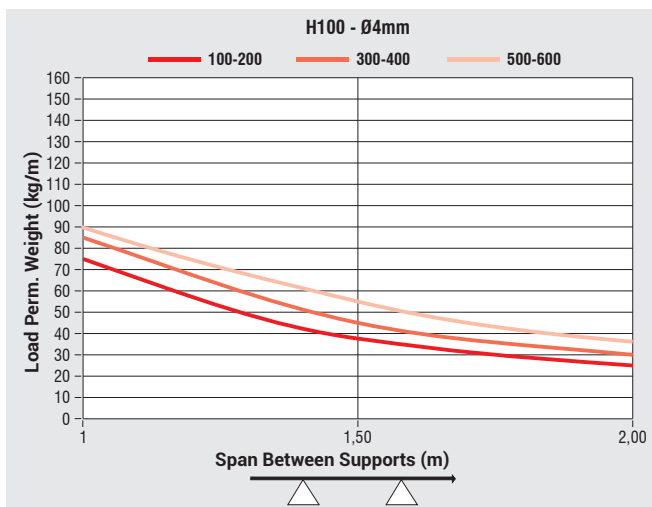
Electrogalvanized (TS 149), Hot Dip Galvanized (TS EN ISO 1461), Stainless Steel (SS304 -SS316)



Description	H (mm)	A (mm)	T (mm)	Weight (kg/m)	EG Code	Weight (kg/m)	HDG Code	Weight (kg/m)	SS Code
100 TLS 200	100	200	4	1,367	3178509	1,436	3322548	1,387	3194446
100 TLS 250	100	250	4	1,518	3194609	1,594	3322549	1,540	3194626
100 TLS 300	100	300	4	1,668	3178510	1,751	3322550	1,692	3194448
100 TLS 400	100	400	4	1,968	3178511	2,066	3322551	1,996	3194450
100 TLS 500	100	500	4	2,268	3178512	2,382	3322552	2,300	3194452
100 TLS 600	100	600	4	2,569	3178513	2,697	3322553	2,605	3194454
100 TLS 200	100	200	5	2,127	3178534	2,234	3322571	2,157	3194447
100 TLS 250	100	250	5	2,361	3194604	2,479	3322572	2,394	3194627
100 TLS 300	100	300	5	2,594	3178535	2,724	3322573	2,630	3194449
100 TLS 400	100	400	5	3,061	3178536	3,215	3322574	3,103	3194451
100 TLS 500	100	500	5	3,529	3178537	3,705	3322575	3,577	3194453
100 TLS 600	100	600	5	3,996	3178538	4,196	3322576	4,050	3194455



H=035, single row wire.
H=055, two rows wire.
H=100, three rows wire.



■ Load Perm. Weight may change +/- according to the sheet tolerance and hardness. Please contact to your customer representative for detailed information.

■ Please contact your representative for inquiries regarding stainless steel alternatives.

■ Please indicate order code in your orders.

■ Please contact us for special dimensions.

■ Material weights may vary by ± 10%

■ All dimensions are given as in mm

■ EG= Electrogalvanized

■ SS= Stainless Steel

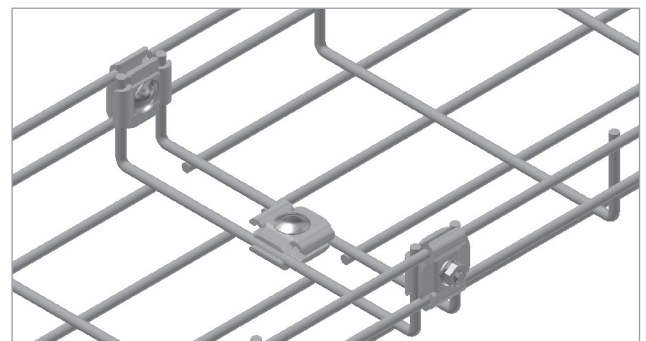
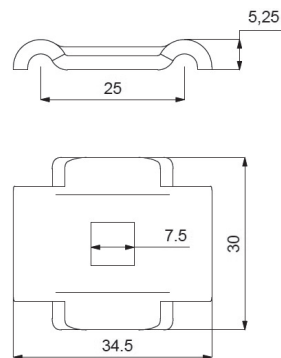
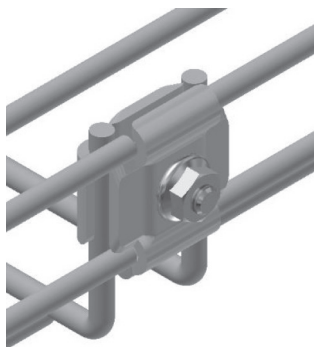
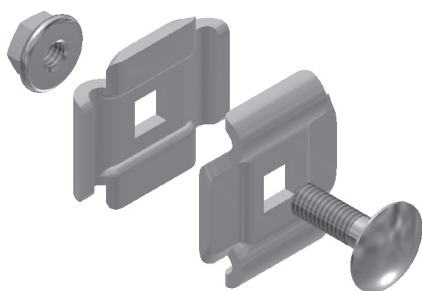
■ PG= Pre-Galvanized

■ HDG= Hot Dip Galvanized

Description	T (mm)	Weight (kg/pcs)	Order Code
TLS Wire Mesh Bolt (EG: Electrogalvanized)	2,5	0,040	3000624
M6x20 Round Head Bolt Set (EG: Electrogalvanized)	-	0,020	1002984
TLS Wire Mesh Bolt (AISI 304)	2,5	0,040	3000625
M6x20 Round Head Bolt Set (EG: AISI 304)	-	0,020	1000923

- Wire Mesh Joint Fitting Assembly;**
- 1 Piece Wire Mesh Joint Fitting
 - 1 Piece M6x20 Round Head Joint Fitting
 - 1 Piece M6 Nut is Needed.

► APPLICATION EXAMPLES



► During Installation; Number Of Additional Elements To Be Used:

Tray Width	H35			H55			H100		
	Side ↓	Bottom ↔	Total	Side ↓	Bottom ↔	Total	Side ↓	Bottom ↔	Total
100	2	0	2	2	0	2	2	0	2
150	2	0	2	2	0	2	2	0	2
200	2	1	3	2	1	3	4	1	5
250	2	1	3	2	1	3	4	1	5
300	2	2	4	2	2	4	4	2	6
400	2	2	4	2	2	4	4	2	6
500	2	3	5	2	3	5	4	3	7
600	2	3	5	2	3	5	4	3	7

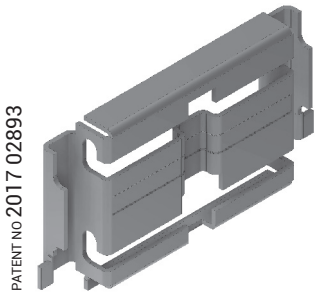
- Please contact your representative for inquiries regarding stainless steel alternatives.
- Please indicate order code in your orders.
- Please contact us for special dimensions.
- Material weights may vary by ± 10%

■ All dimensions are given as in mm

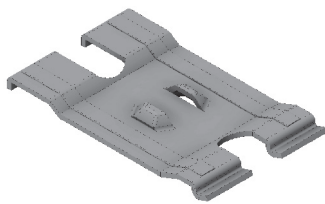
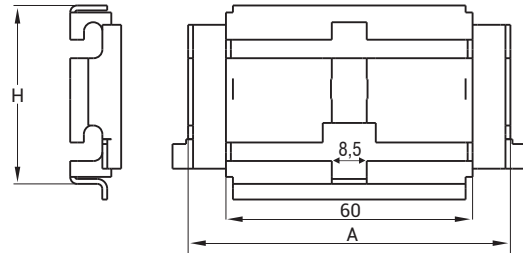
- EG= Electrogalvanized
- SS= Stainless Steel
- PG= Pre-Galvanized
- HDG= Hot Dip Galvanized

Description	H (mm)	A (mm)	T (mm)	Weight (kg/pcs)	EG Code
WIRE CONDUIT JOINT (Boltless)	45	78	1,2	0,047	3108825
WIRE CONDUIT JOINT (Boltless Bottom)	35	1,2	0,020	3125835	

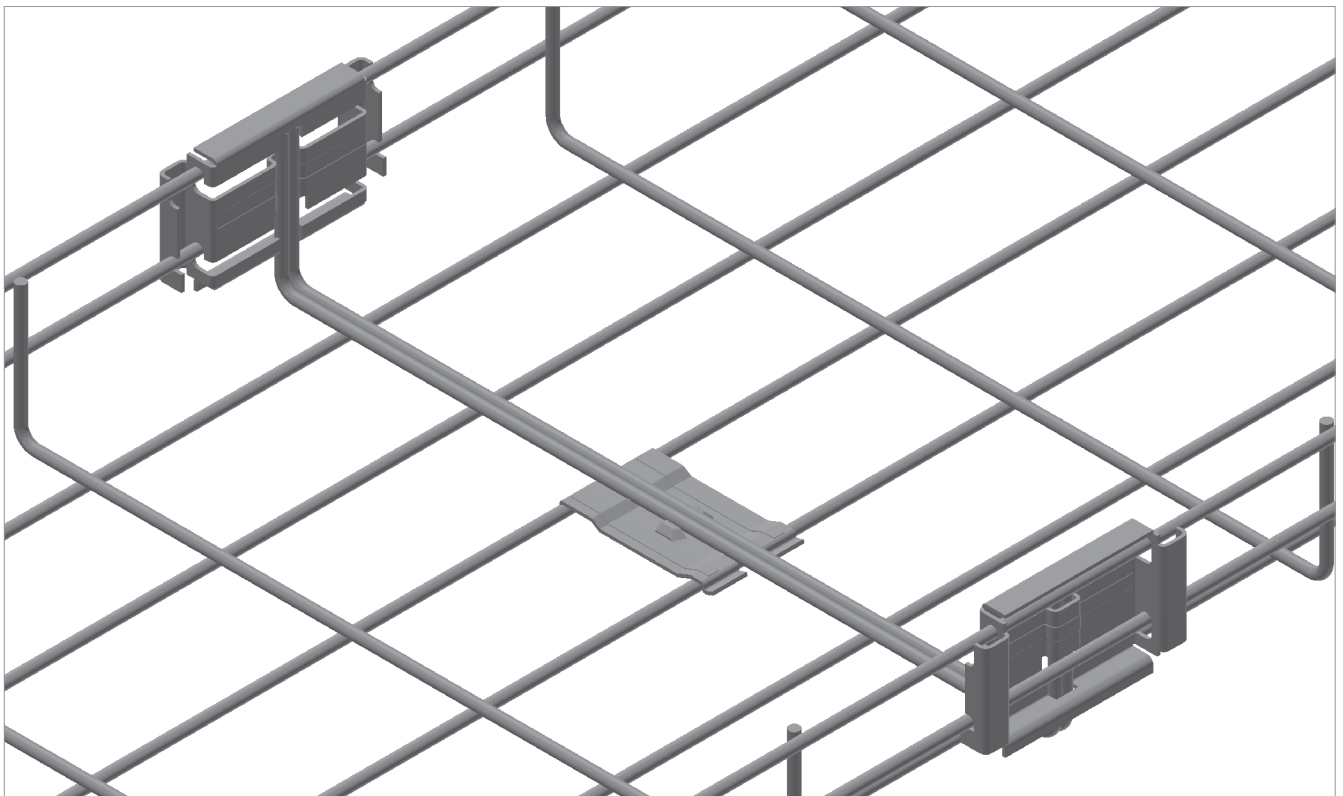
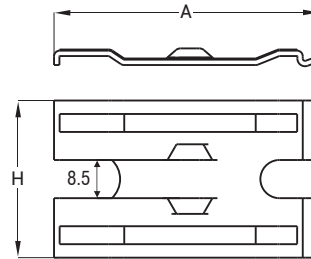
- Wire Mesh Boltless Lateral Joint is used in Ø 4 mm / H: 055 - H: 100 / A : 100-250-300-400-500-600 Wire Cable Mesh.
- Wire Mesh Boltless Lateral Joint is not used in Ø 5 mm Wire Cable Mesh
- 1 piece of Wire Mesh Boltless Bottom Joint is used for A:200-250 where 2 pieces are used for A: 300-400 and 3 pieces are used for A: 500-600.



Wire Mesh Boltless Lateral Joint



Wire Mesh Boltless Bottom Joint



■ Please contact your representative for inquiries regarding stainless steel alternatives.

■ Please indicate order code in your orders.

■ Please contact us for special dimensions.

■ Material weights may vary by ± 10%

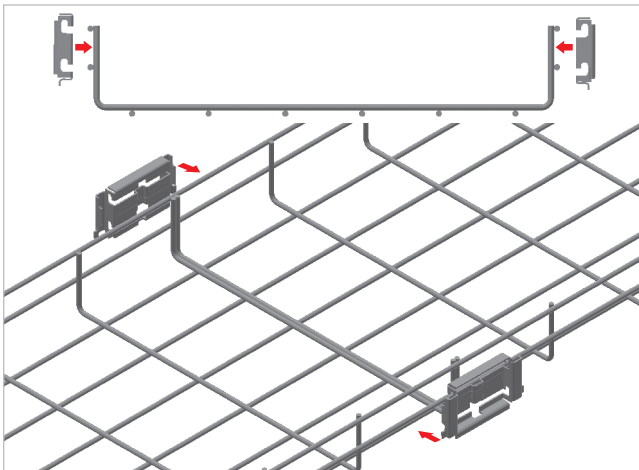
■ All dimensions are given as in mm

■ EG= Electrogalvanized

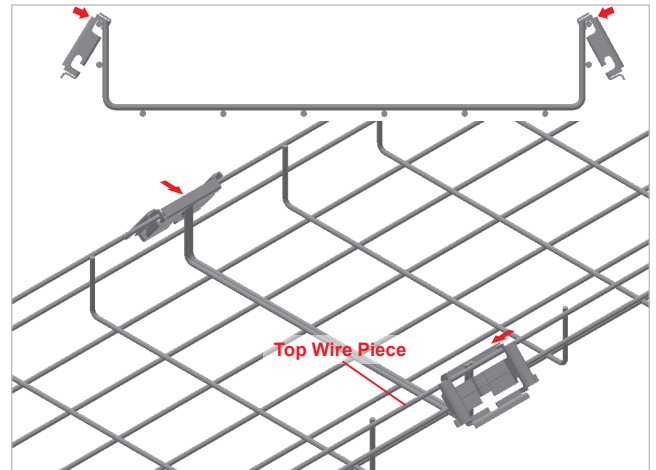
■ SS= Stainless Steel

■ PG= Pre-Galvanized

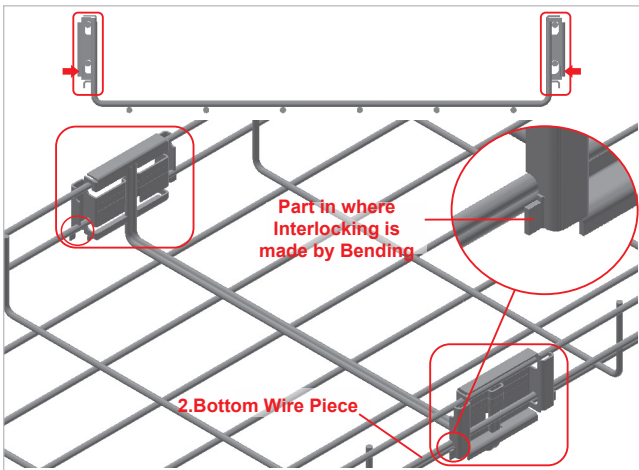
■ HDG= Hot Dip Galvanized



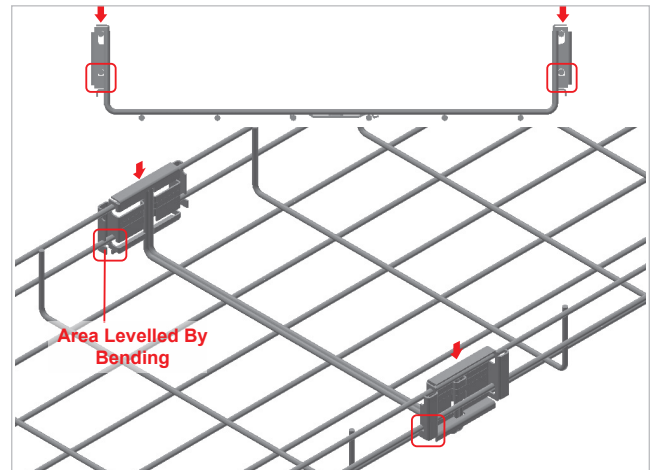
■ Wire mesh boltless lateral joint elements are aligned on junction wires of two wire mesh as shown on the figure.



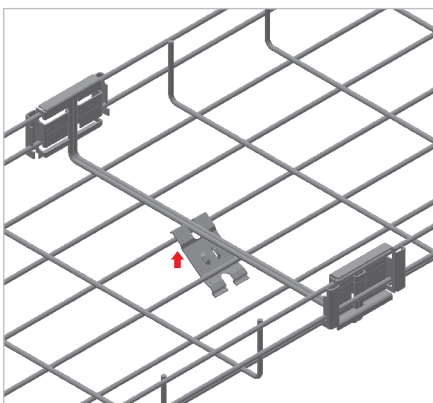
■ Upper wire slot of the lateral joint element is placed as angular on upper wire of wire mesh.



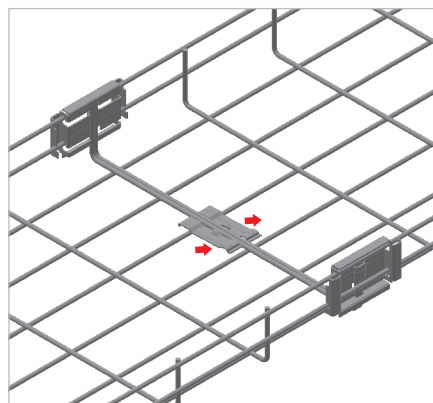
■ Bottom wire mesh of the lateral joint element is placed on the bottom wire of the wire mesh.



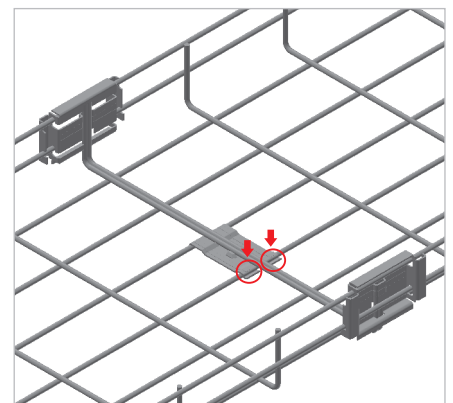
■ Wire mesh tray lateral joint elements are clamped by hand towards top to down direction. The assembly step shall be completed by bending 2 latches corresponding to the lower part of the bottom wire with the help of a pincer with an angle of 90°.



■ Bottom Joint element is fixed from the lower side of the conduit as shown in the figure.



■ Bottom Joint element is slid upon levelling after passing through the bottom of the conduit.



■ Interlocking process is performed by pressing tips of bottom joint element by hand.

■ Please contact your representative for inquiries regarding stainless steel alternatives.

■ Please indicate order code in your orders.

■ Please contact us for special dimensions.

■ Material weights may vary by ± 10%

■ All dimensions are given as in mm

■ EG= Electrogalvanized

■ SS= Stainless Steel

■ PG= Pre-Galvanized

■ HDG= Hot Dip Galvanized

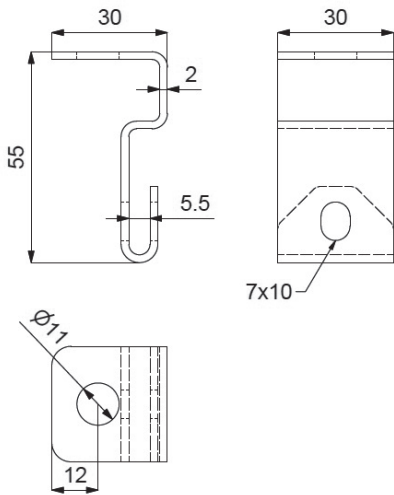
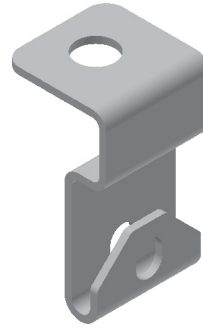
E-LINETLS

►► TLS SINGLE ROD Z-HOLDER

Pre-Galvanized (TS 10143)



Description	T (mm)	Weight (kg/pcs)	PG Code
TLS SINGLE ROD Z-HOLDER (1 Set)	2	0,120	3179554



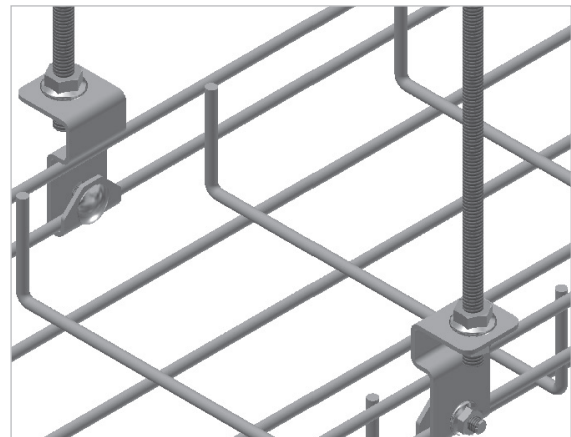
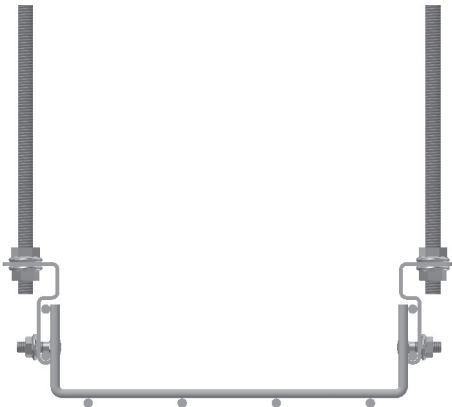
TLS SINGLE ROD Z-HOLDER" Contents Of 1 Set Of ;

- 2 Piece Z-HOLDER
- 2 Piece M6x20 Round Head Bolt
- 2 Piece M6 Nuts Should Be Used.

Necessary Accessories For Assembly ;

- 1 Piece Rod (M8 / M10 x L)
- 2 Piece Nut (M8 / M10)

► APPLICATION EXAMPLES



■ Please contact your representative for inquiries regarding stainless steel alternatives.

■ Please indicate order code in your orders.

■ Please contact us for special dimensions.

■ Material weights may vary by $\pm 10\%$

■ All dimensions are given as in mm

■ EG= Electrogalvanized

■ SS= Stainless Steel

■ PG= Pre-Galvanized

■ HDG= Hot Dip Galvanized

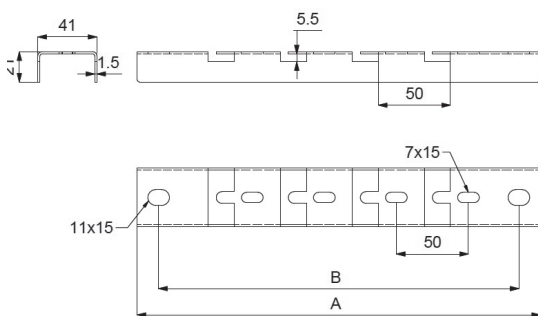
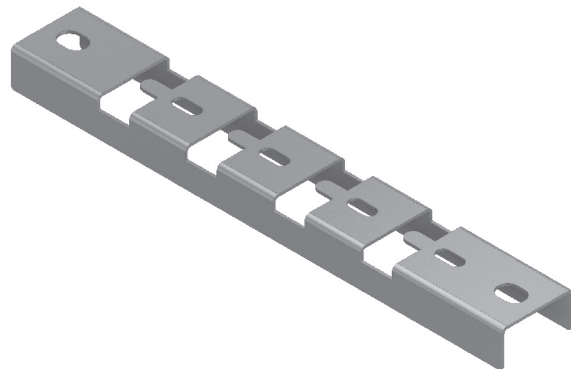
E-LINETLS

►► TLS SNAP-ON U-PROFILE 41x21x1,5

Pre-Galvanized (TS 10143)



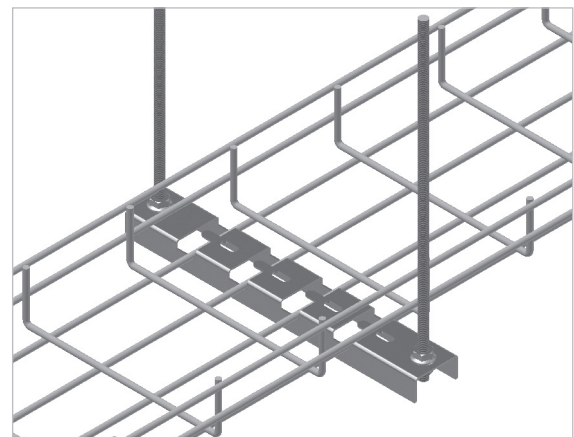
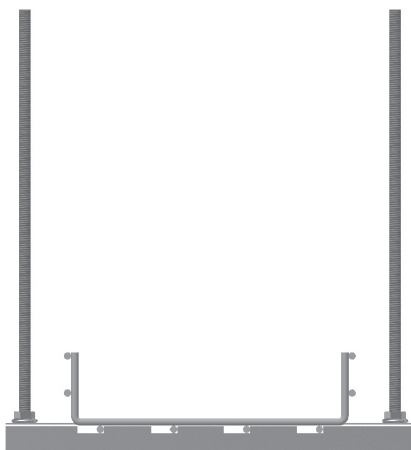
Description	A (mm)	B (mm)	T (mm)	Weight (kg/pcs)	PG Code
TLS SNAP-ON U-PROFILE 050	130	100	1,5	0,097	3179559
TLS SNAP-ON U-PROFILE 100	180	140	1,5	0,142	3179560
TLS SNAP-ON U-PROFILE 150	230	190	1,5	0,177	3179561
TLS SNAP-ON U-PROFILE 200	280	240	1,5	0,213	3179562
TLS SNAP-ON U-PROFILE 250	330	290	1,5	0,248	3179563
TLS SNAP-ON U-PROFILE 300	380	340	1,5	0,283	3179564
TLS SNAP-ON U-PROFILE 400	480	440	1,5	0,354	3179565
TLS SNAP-ON U-PROFILE 500	580	540	1,5	0,420	3179566
TLS SNAP-ON U-PROFILE 600	680	640	1,5	0,495	3179567



Wire Mesh Joint Fitting Assembly;

- 2 piece Rod (M8 / M10 x L)
- 4 piece Nut (M8 / M10)

► APPLICATION EXAMPLES



■ Please contact your representative for inquiries regarding stainless steel alternatives.

■ Please indicate order code in your orders.

■ Please contact us for special dimensions.

■ Material weights may vary by $\pm 10\%$

■ All dimensions are given as in mm

■ EG= Electrogalvanized

■ SS= Stainless Steel

■ PG= Pre-Galvanized

■ HDG= Hot Dip Galvanized

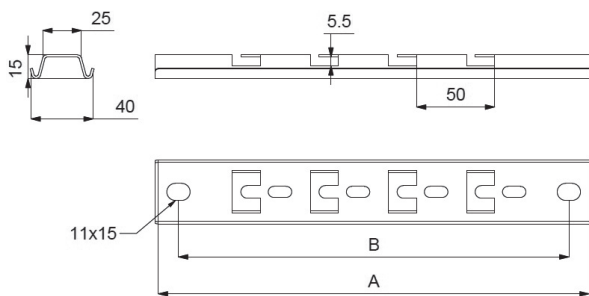
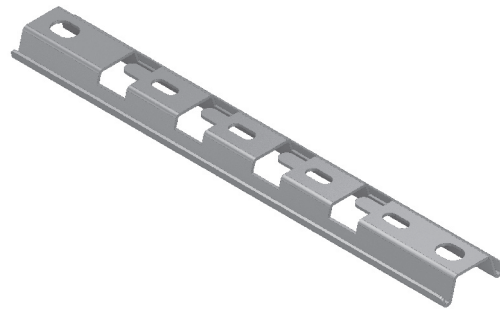
E-LINETLS

►► TLS SNAP-ON OMEGA-PROFILE 41x15x1,5

Pre-Galvanized (TS 10143)



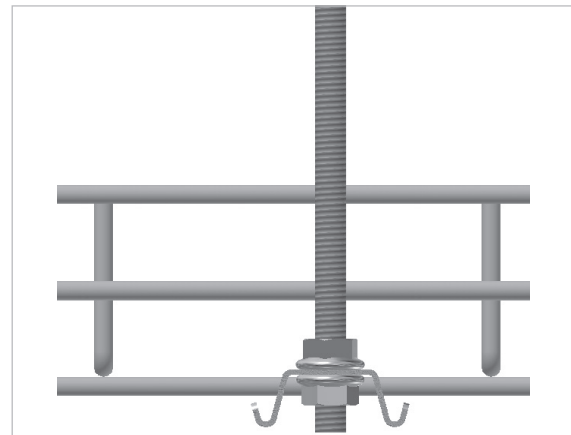
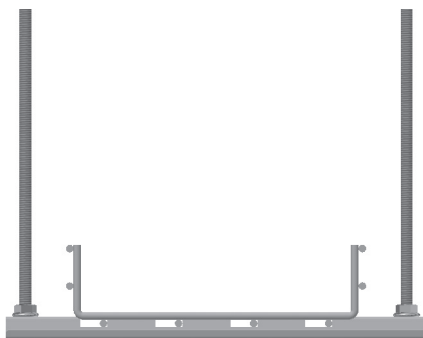
Description	A (mm)	B (mm)	T (mm)	Weight (kg/pcs)	PG Code
TLS SNAP-ON OMEGA-PROFILE 050	130	100	1,5	0,085	3179569
TLS SNAP-ON OMEGA-PROFILE 100	180	140	1,5	0,123	3179570
TLS SNAP-ON OMEGA-PROFILE 150	230	190	1,5	0,155	3179571
TLS SNAP-ON OMEGA-PROFILE 200	280	240	1,5	0,188	3179572
TLS SNAP-ON OMEGA-PROFILE 250	330	290	1,5	0,220	3179573
TLS SNAP-ON OMEGA-PROFILE 300	380	340	1,5	0,252	3179574
TLS SNAP-ON OMEGA-PROFILE 400	480	440	1,5	0,317	3179575
TLS SNAP-ON OMEGA-PROFILE 500	580	540	1,5	0,382	3179576
TLS SNAP-ON OMEGA-PROFILE 600	680	640	1,5	0,446	3179577



Necessary Accessories For Assembly ;

- 2 Piece Rod (M8 / M10 x L)
- 4 Piece Nut (M8 / M10)

► APPLICATION EXAMPLES



■ Please contact your representative for inquiries regarding stainless steel alternatives.

■ Please indicate order code in your orders.

■ Please contact us for special dimensions.

■ Material weights may vary by $\pm 10\%$

■ All dimensions are given as in mm

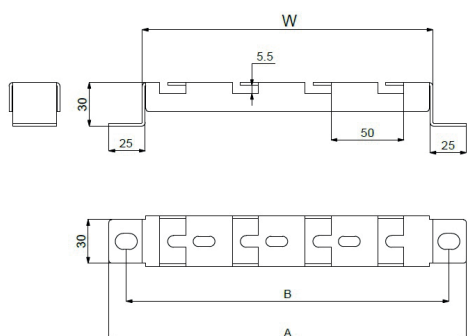
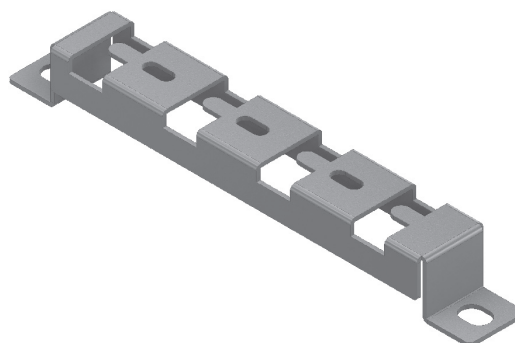
■ EG= Electrogalvanized

■ SS= Stainless Steel

■ PG= Pre-Galvanized

■ HDG= Hot Dip Galvanized

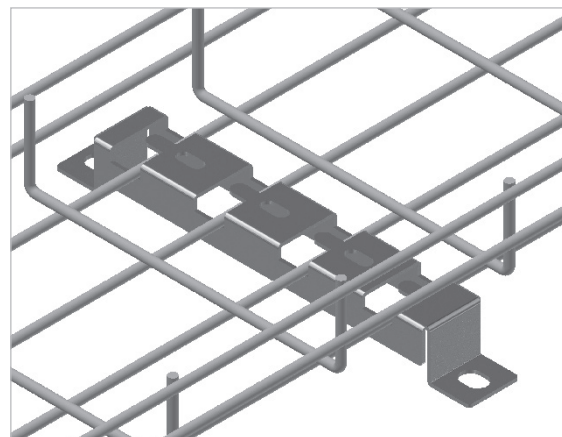
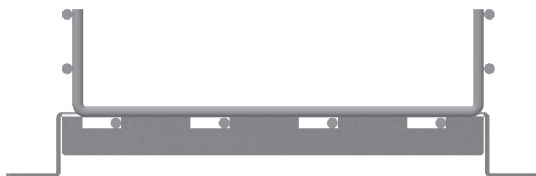
Description	A (mm)	B (mm)	W (mm)	T (mm)	Weight (kg/pcs)	PG Code
TLS Tabbed OMEGA-Duct Carrier 050	95	70	50	2	0,085	3179593
TLS Tabbed OMEGA-Duct Carrier 100	145	120	100	2	0,125	3179594
TLS Tabbed OMEGA-Duct Carrier 150	195	170	150	2	0,167	3179595
TLS Tabbed OMEGA-Duct Carrier 200	245	220	200	2	0,209	3179596
TLS Tabbed OMEGA-Duct Carrier 250	295	270	250	2	0,251	3179597
TLS Tabbed OMEGA-Duct Carrier 300	345	320	300	2	0,293	3179598



Necessary accessories for assembly ;

- 2 pieces Dowel (M8 / M10)

► APPLICATION EXAMPLES



■ Please contact your representative for inquiries regarding stainless steel alternatives.

■ Please indicate order code in your orders.

■ Please contact us for special dimensions.

■ Material weights may vary by $\pm 10\%$

■ All dimensions are given as in mm

■ EG= Electrogalvanized

■ SS= Stainless Steel

■ PG= Pre-Galvanized

■ HDG= Hot Dip Galvanized

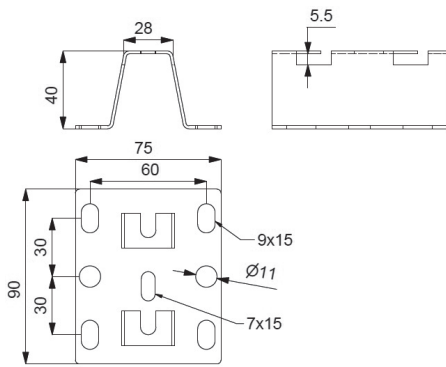
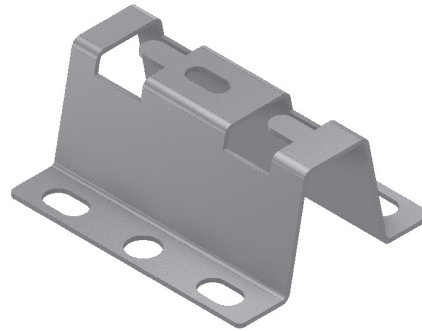
E-LINETLS

►► TLS V DUCT CARRIER

Pre-Galvanized (TS 10143)



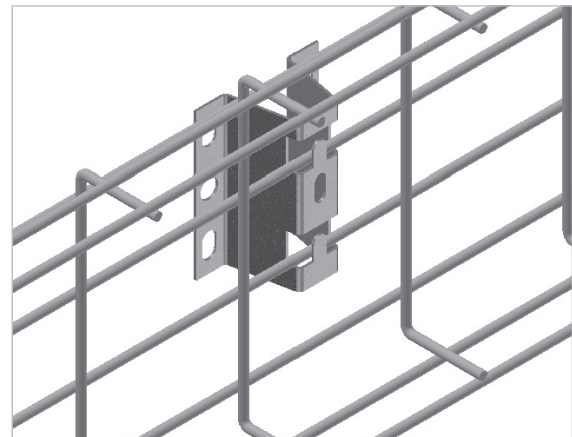
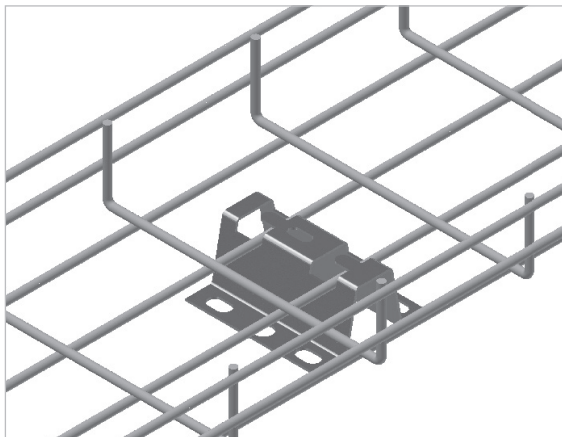
Description	T (mm)	Weight (kg/set)	PG Code
TLS V DUCT CARRIER	1,5	0,123	3179599



Necessary Accessories For Assembly ;

- 2 pcs. Dowel (M8 / M10) (Ground Mounting)

► APPLICATION EXAMPLES



■ Please contact your representative for inquiries regarding stainless steel alternatives.

■ Please indicate order code in your orders.

■ Please contact us for special dimensions.

■ Material weights may vary by ± 10%

■ All dimensions are given as in mm

■ EG= Electrogalvanized

■ SS= Stainless Steel

■ PG= Pre-Galvanized

■ HDG= Hot Dip Galvanized

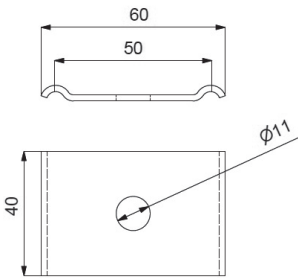
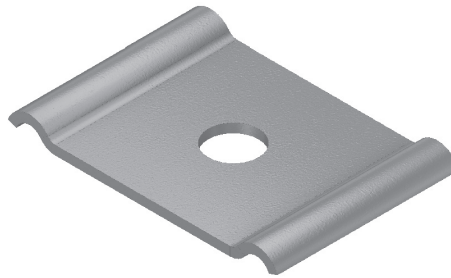
E-LINETLS

►► TLS FIXING UNIT

Pre-Galvanized (TS 10143)



Description	T (mm)	Weight (kg/set)	PG Code
TLS FIXING UNIT	2	0,037	3179600



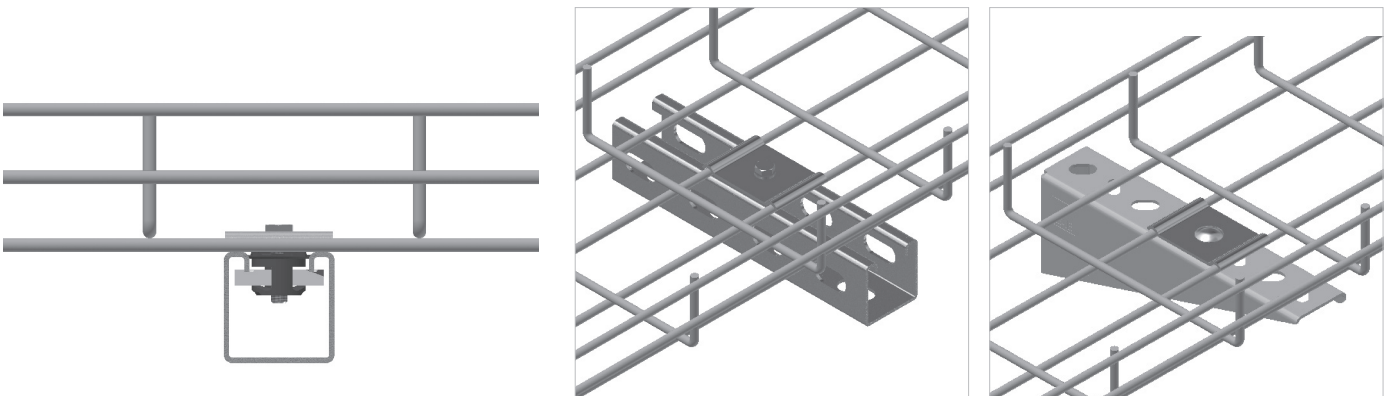
Accessories required to secure to BINRAK Profile;

- 1 AKB bolt pcs. (M8 x 20)
- 1 washer pcs. (M8)
- 1 Quick Traverse Nut pcs. (M8)

Accessories required to secure to the console;

- 1 pcs. M6 x 20 round head bolt.
- 1 adet M6 flanged nut.

► APPLICATION EXAMPLES



■ Please contact your representative for inquiries regarding stainless steel alternatives.

■ Please indicate order code in your orders.

■ Please contact us for special dimensions.

■ Material weights may vary by $\pm 10\%$

■ All dimensions are given as in mm

■ EG= Electrogalvanized

■ SS= Stainless Steel

■ PG= Pre-Galvanized

■ HDG= Hot Dip Galvanized

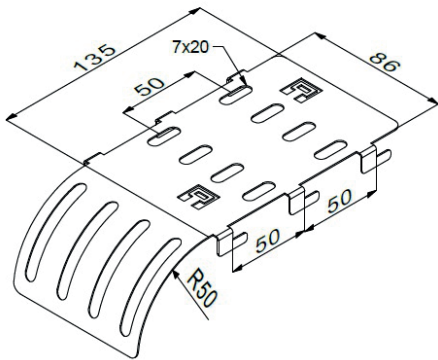
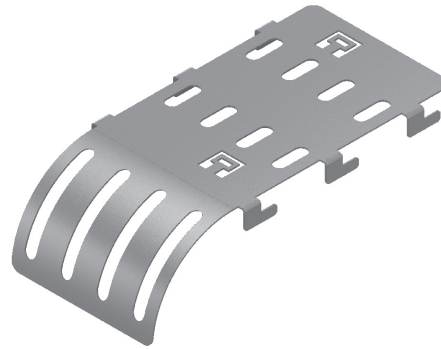
E-LINETLS

►► TLS LANDING PLATE

Pre-Galvanized (TS 10143)

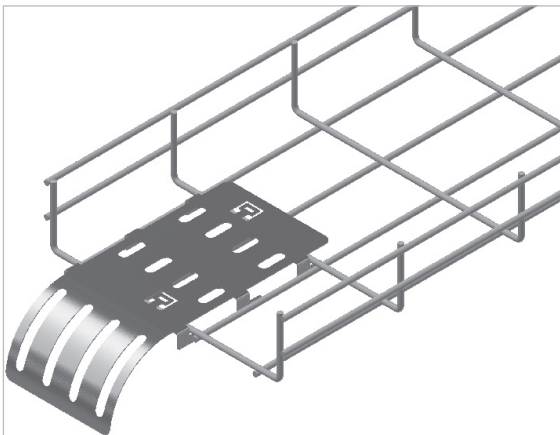


Description	R (mm)	L (mm)	T (mm)	Weight (kg/set)	PG Code
TLS Landing Plate	50	192	1,2	0,155	3179601

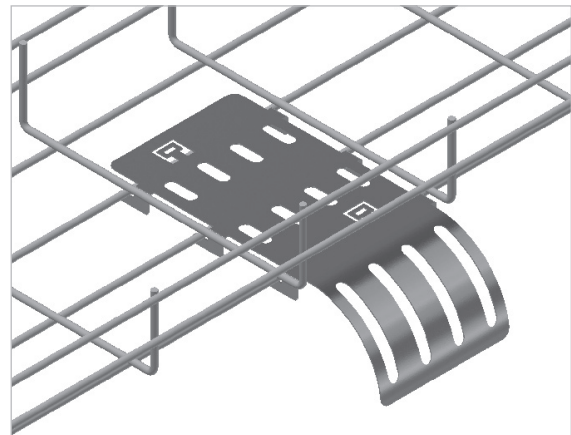


► APPLICATION EXAMPLES

End Landing Mounting Application



Side Landing Mounting Application



■ Please contact your representative for inquiries regarding stainless steel alternatives.

■ Please indicate order code in your orders.

■ Please contact us for special dimensions.

■ Material weights may vary by ± 10%

■ All dimensions are given as in mm

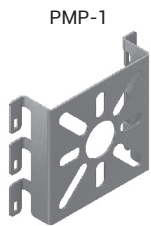
■ EG= Electrogalvanized

■ SS= Stainless Steel

■ PG= Pre-Galvanized

■ HDG= Hot Dip Galvanized

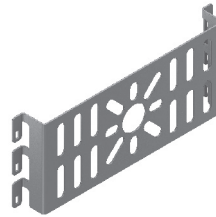
Description	T (mm)	Weight (kg/set)	PG Code
TLS PMP-1	1,2	0,056	3179602
TLS PMP-2	1,2	0,158	3179603
TLS PMP-3	1,2	0,098	3179604
TLS PMP-4	1,2	0,238	3179605



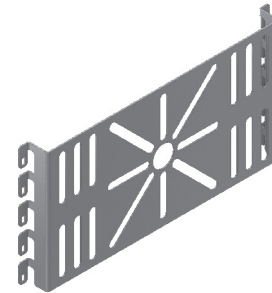
PMP-1



PMP-2

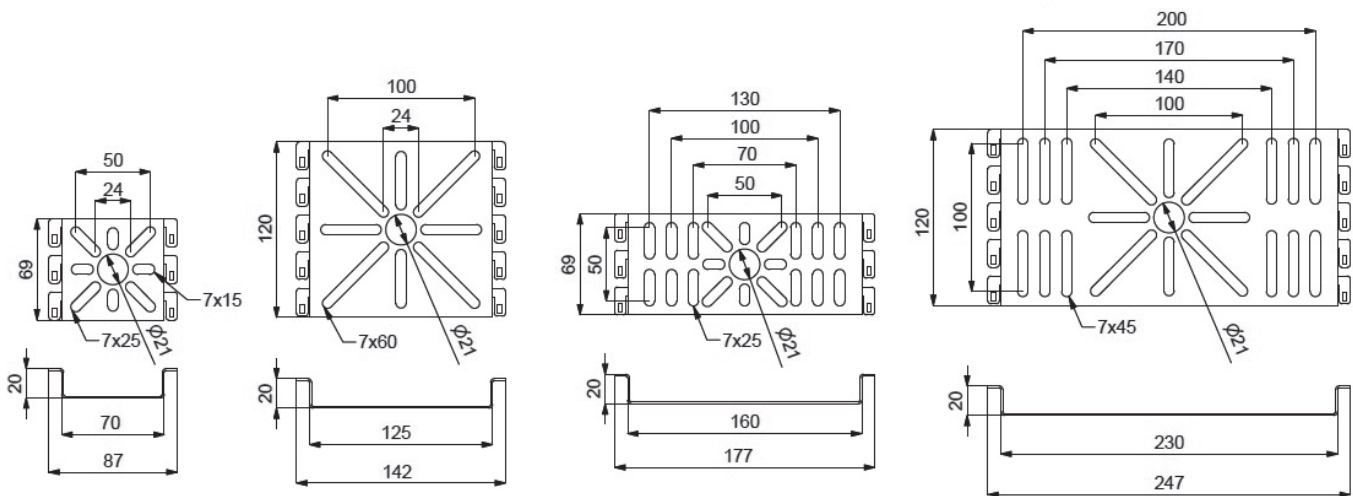


PMP-3



PMP-4

► APPLICATION EXAMPLES



■ Please contact your representative for inquiries regarding stainless steel alternatives.

■ Please indicate order code in your orders.

■ Please contact us for special dimensions.

■ Material weights may vary by ± 10%

■ All dimensions are given as in mm

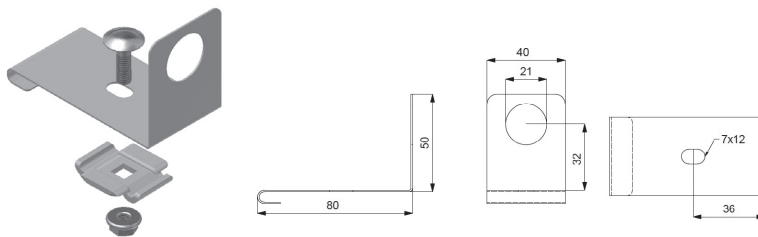
■ EG= Electrogalvanized

■ SS= Stainless Steel

■ PG= Pre-Galvanized

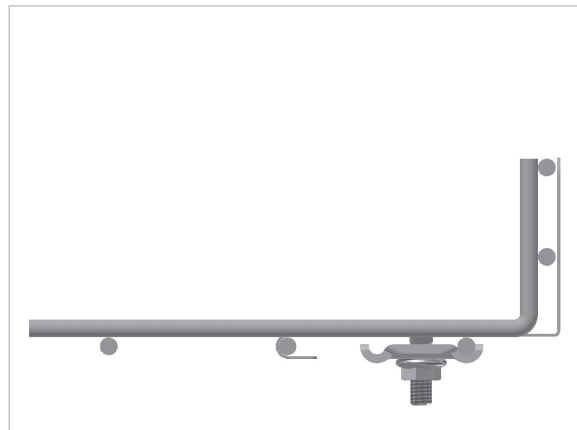
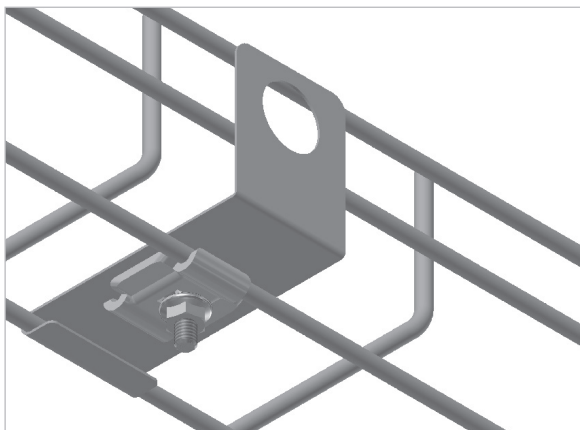
■ HDG= Hot Dip Galvanized

Description	Ø (mm)	T (mm)	Weight (kg/set)	PG Code
TLS Union Outlet Element (1 Set)	21	1,2	0,080	3179606



"Union Outlet Element" Content of 1 set;

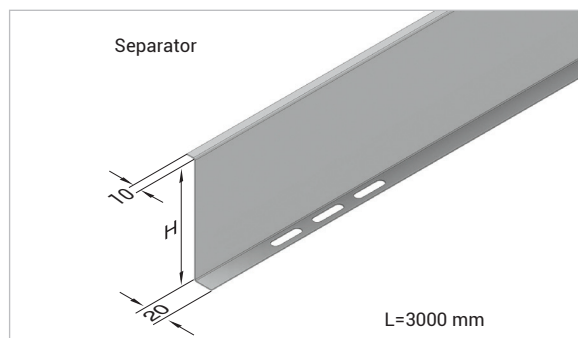
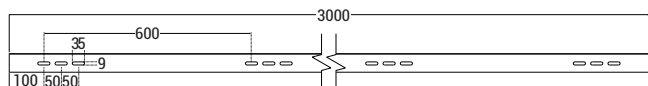
- 1 pcs. Union Outlet Element
- 1 pcs. "Cable Basket Joint Fitting"
- 1 pcs. Round Head Bolt M6x20
- 1 pcs. Nut M6.



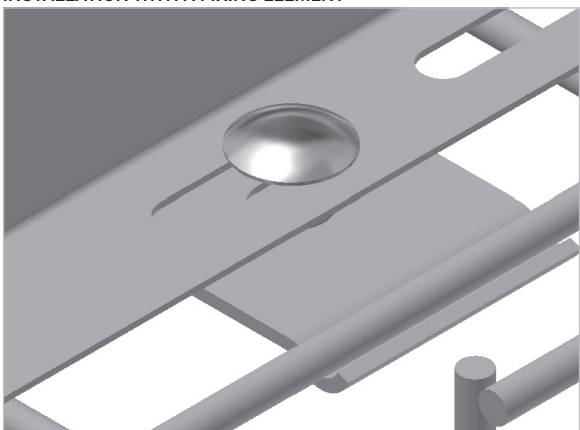
► Separator

Pre-Galvanized (TS EN 10346 - TS EN 10143)

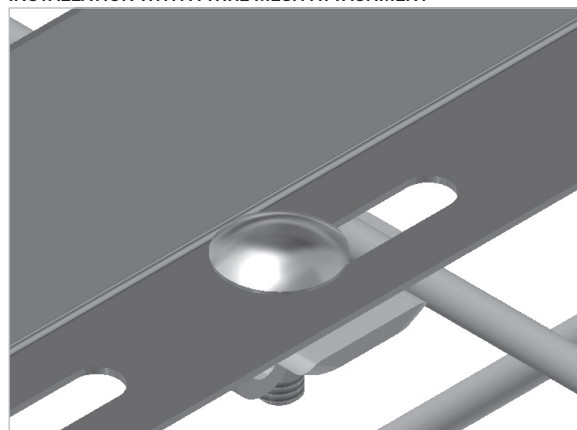
Description	H (mm)	T (mm)	Weight (kg/m)	PG Code
35 TLS Separator	25	0,8	0,909	3179608
55 TLS Separator	45	0,8	1,284	3179609
85 TLS Separator	75	1	2,313	3298329
100 TLS Separator	90	1	2,667	3179610



INSTALLATION WITH A FIXING ELEMENT



INSTALLATION WITH A WIRE MESH ATTACHMENT



■ Please contact your representative for inquiries regarding stainless steel alternatives.

■ Please indicate order code in your orders.

■ Please contact us for special dimensions.

■ Material weights may vary by ± 10%

■ All dimensions are given as in mm

■ EG= Electrogalvanized

■ PG= Pre-Galvanized

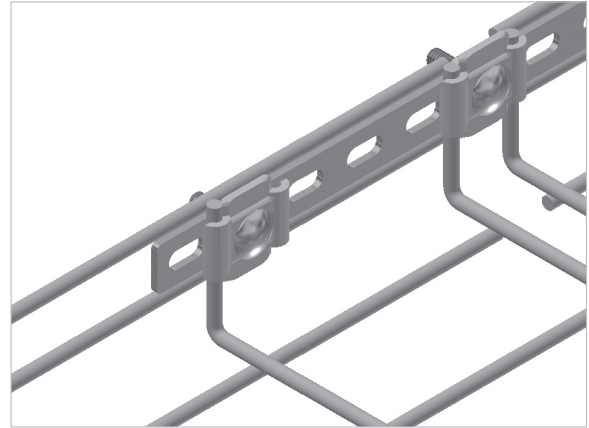
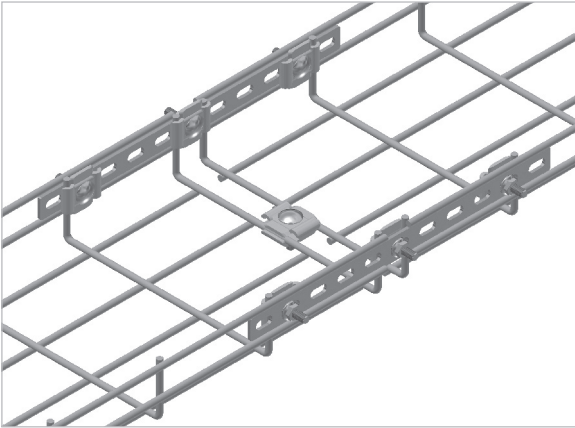
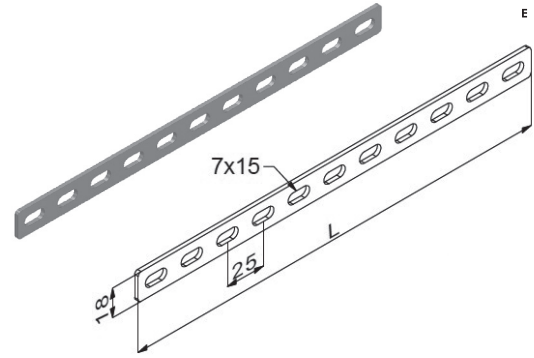
■ SS= Stainless Steel

■ HDG= Hot Dip Galvanized

Description	H (mm)	L (mm)	T (mm)	Weight (kg/pcs)	PG Code
TLS SLOTTED STRAIGHT STRIP 275	18	275	2,5	0,077	3179611
TLS SLOTTED STRAIGHT STRIP 550	18	550	2,5	0,153	3179612
TLS SLOTTED STRAIGHT STRIP 1100	18	1100	2,5	0,307	3179613

Accessories that shall be ordered in addition to 1 piece of "Slotted Straight Strip":

- 3 pcs. Wire Mesh Joint Fitting
- 3 pcs. Round Head Bolt M6x20
- 3 pcs. Nut M6.



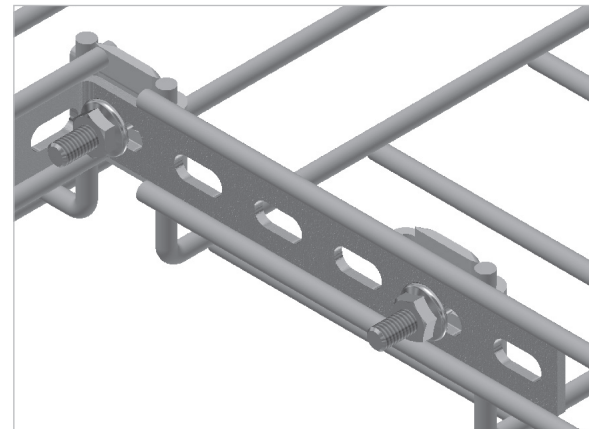
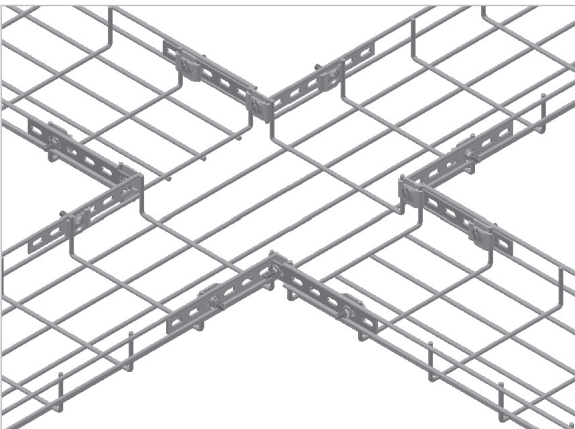
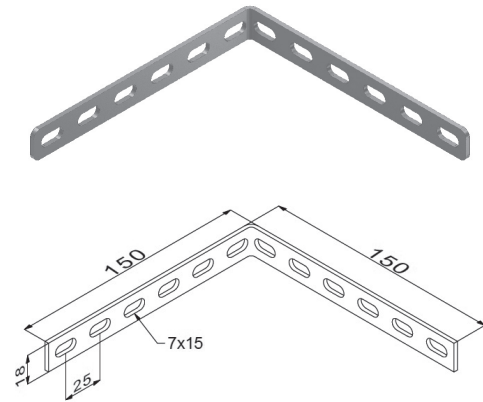
► TLS Slotted L-Strip

Pre-Galvanized (TS 10143)

Description	H (mm)	L (mm)	T (mm)	Weight (kg/pcs)	PG Code
TLS SLOTTED L-STRIP	18	150x150	2,5	0,082	3179615

Accessories that shall be ordered in addition to 1 piece of "Slotted L-Strip":

- 3 pcs. Wire Mesh Joint Fitting
- 3 pcs. Round Head Bolt M6x20
- 3 pcs. Nut M6.



■ Please contact your representative for inquiries regarding stainless steel alternatives.

■ Please indicate order code in your orders.

■ Please contact us for special dimensions.

■ Material weights may vary by ± 10%

■ All dimensions are given as in mm

■ EG= Electrogalvanized

■ SS= Stainless Steel

■ PG= Pre-Galvanized

■ HDG= Hot Dip Galvanized

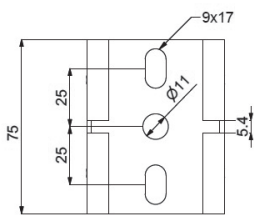
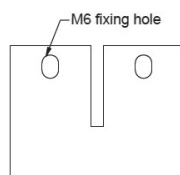
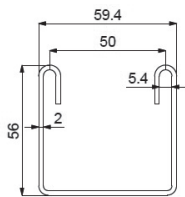
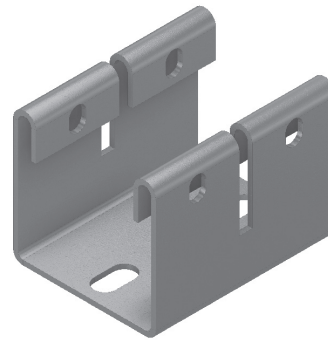
E-LINETLS

►► TLS FIXTURE HOLDER

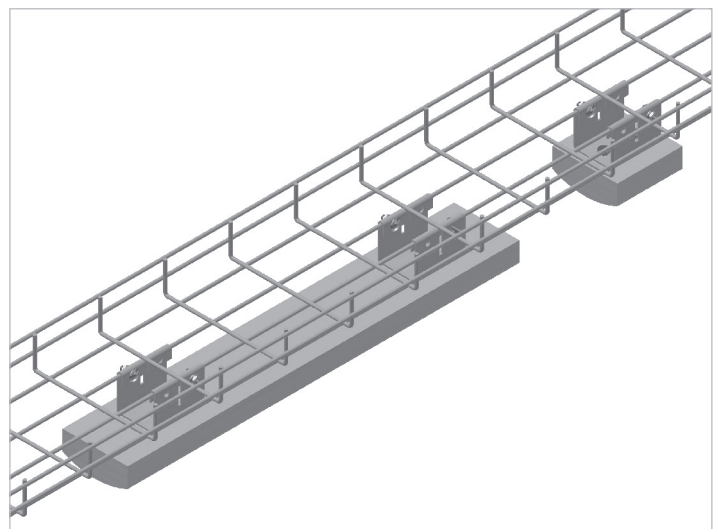
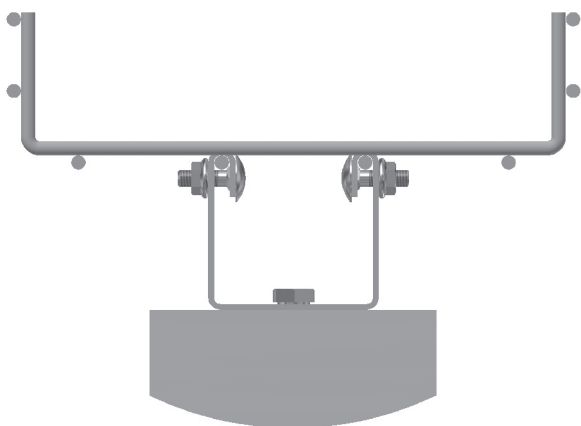
Pre-Galvanized (TS 10143)



Description	H (mm)	L (mm)	T (mm)	Weight (kg/pcs)	PG Code
TLS FIXTURE HOLDER	56	75	2,0	0,216	3179616



► APPLICATION EXAMPLES



■ Please contact your representative for inquiries regarding stainless steel alternatives.

■ Please indicate order code in your orders.

■ Please contact us for special dimensions.

■ Material weights may vary by $\pm 10\%$

■ All dimensions are given as in mm

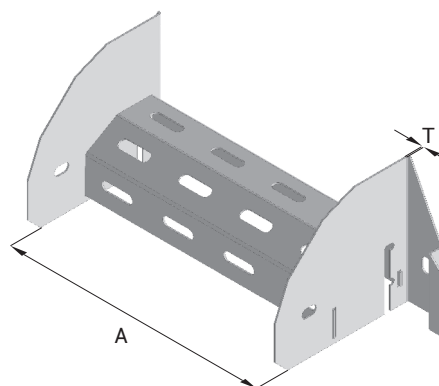
■ EG= Electrogalvanized

■ SS= Stainless Steel

■ PG= Pre-Galvanized

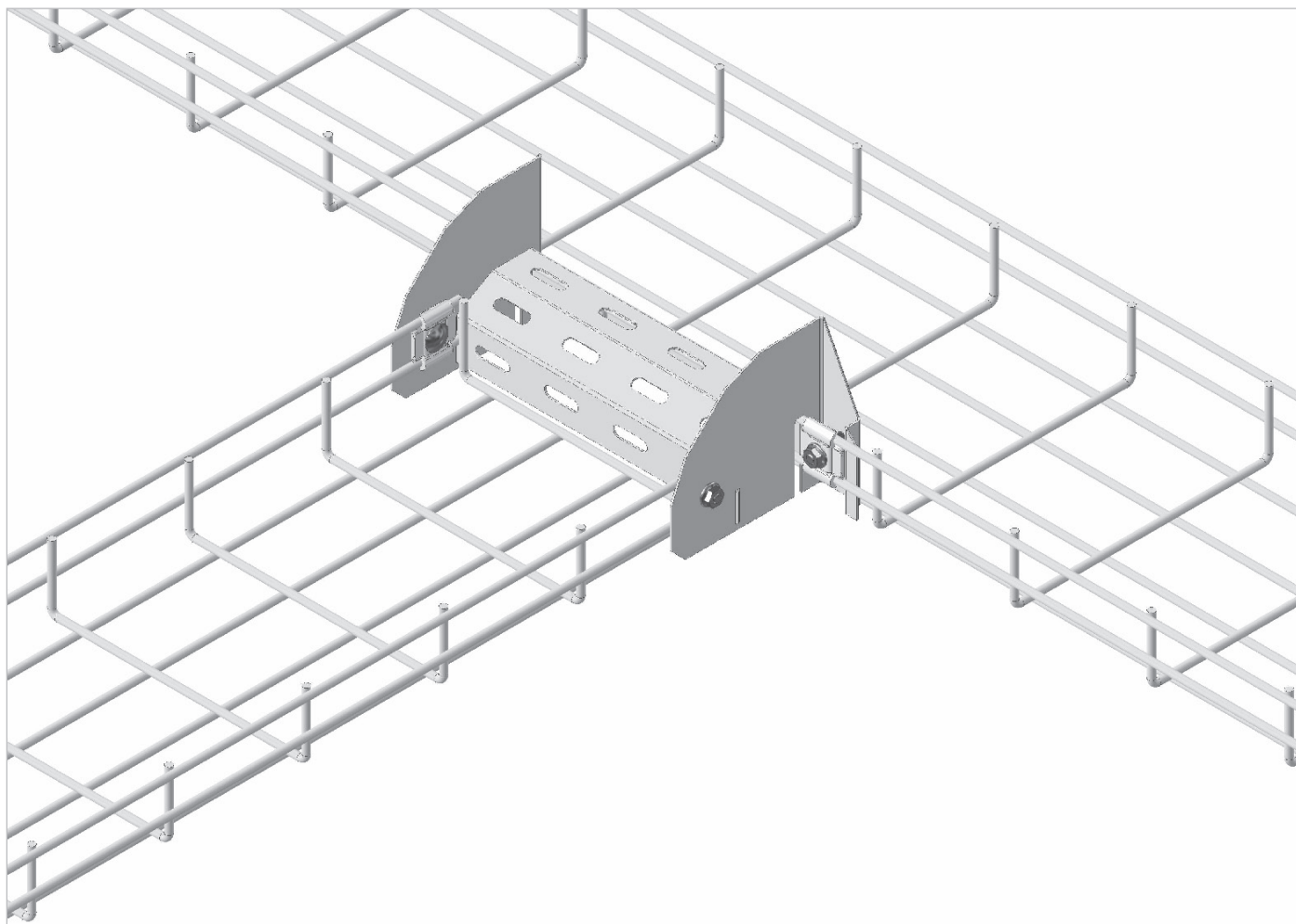
■ HDG= Hot Dip Galvanized

Description	A (mm)	T (mm)	Weight (kg/pcs)	PG Code
H55 TLS Side Dropout Bend Type 1 - 050	50	1,2	0,292	3197355
H55 TLS Side Dropout Bend Type 1 - 100	100	1,2	0,344	3197356
H55 TLS Side Dropout Bend Type 1 - 150	150	1,2	0,397	3197357
H55 TLS Side Dropout Bend Type 1 - 200	200	1,2	0,449	3197358
H55 TLS Side Dropout Bend Type 1 - 250	250	1,2	0,501	3197359
H55 TLS Side Dropout Bend Type 1 - 300	300	1,2	0,554	3197360
H55 TLS Side Dropout Bend Type 1 - 400	400	1,2	0,659	3197361
H55 TLS Side Dropout Bend Type 1 - 500	500	1,2	0,764	3197362
H55 TLS Side Dropout Bend Type 1 - 600	600	1,2	0,868	3197363
H100 TLS Side Dropout Bend Type 1 - 100	100	1,2	0,474	3197364
H100 TLS Side Dropout Bend Type 1 - 150	150	1,2	0,527	3197365
H100 TLS Side Dropout Bend Type 1 - 200	200	1,2	0,579	3197366
H100 TLS Side Dropout Bend Type 1 - 250	250	1,2	0,631	3197367
H100 TLS Side Dropout Bend Type 1 - 300	300	1,2	0,684	3197368
H100 TLS Side Dropout Bend Type 1 - 400	400	1,2	0,789	3197369
H100 TLS Side Dropout Bend Type 1 - 500	500	1,2	0,894	3197370
H100 TLS Side Dropout Bend Type 1 - 600	600	1,2	0,998	3197371



Side dropout module type 1 for assembly ;

- 4 Piece Wire Mesh Joint Fitting
- 4 Piece Round Head Bolt M6x20
- 4 Piece Flanged M6.



TLS

■ Please contact your representative for inquiries regarding stainless steel alternatives.

■ Please indicate order code in your orders.

■ Please contact us for special dimensions.

■ Material weights may vary by ± 10%

■ All dimensions are given as in mm

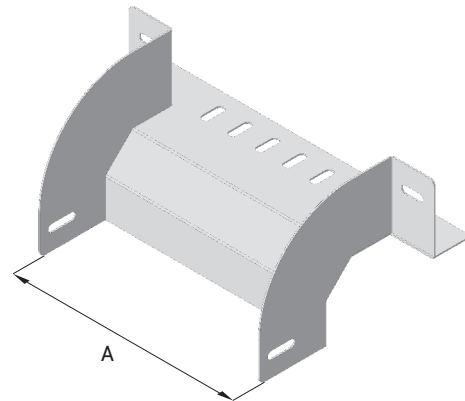
■ EG= Electrogalvanized

■ SS= Stainless Steel

■ PG= Pre-Galvanized

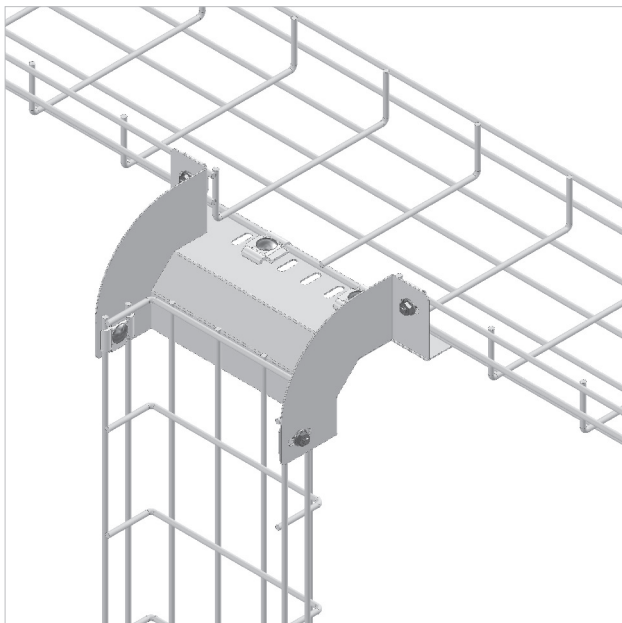
■ HDG= Hot Dip Galvanized

Description	A (mm)	T (mm)	Weight (kg/pcs)	PG Code
H35 TLS Side Dropout Bend Type 2 - 050	50	1,2	0,239	3197372
H35 TLS Side Dropout Bend Type 2 - 100	100	1,2	0,302	3197373
H35 TLS Side Dropout Bend Type 2 - 150	150	1,2	0,365	3197374
H35 TLS Side Dropout Bend Type 2 - 200	200	1,2	0,428	3197375
H35 TLS Side Dropout Bend Type 2 - 250	250	1,2	0,491	3197376
H35 TLS Side Dropout Bend Type 2 - 300	300	1,2	0,554	3197377
H35 TLS Side Dropout Bend Type 2 - 400	400	1,2	0,617	3197378
H35 TLS Side Dropout Bend Type 2 - 500	500	1,2	0,681	3197379
H35 TLS Side Dropout Bend Type 2 - 600	600	1,2	0,744	3197380
H55 TLS Side Dropout Bend Type 2 - 050	50	1,2	0,359	3197381
H55 TLS Side Dropout Bend Type 2 - 100	100	1,2	0,388	3197382
H55 TLS Side Dropout Bend Type 2 - 150	150	1,2	0,451	3197383
H55 TLS Side Dropout Bend Type 2 - 200	200	1,2	0,514	3197384
H55 TLS Side Dropout Bend Type 2 - 250	250	1,2	0,577	3197385
H55 TLS Side Dropout Bend Type 2 - 300	300	1,2	0,640	3197386
H55 TLS Side Dropout Bend Type 2 - 400	400	1,2	0,703	3197387
H55 TLS Side Dropout Bend Type 2 - 500	500	1,2	0,767	3197388
H55 TLS Side Dropout Bend Type 2 - 600	600	1,2	0,830	3197389
H100 TLS Side Dropout Bend Type 2 - 100	100	1,2	0,624	3197390
H100 TLS Side Dropout Bend Type 2 - 150	150	1,2	0,687	3197391
H100 TLS Side Dropout Bend Type 2 - 200	200	1,2	0,750	3197392
H100 TLS Side Dropout Bend Type 2 - 250	250	1,2	0,813	3197393
H100 TLS Side Dropout Bend Type 2 - 300	300	1,2	0,876	3197394
H100 TLS Side Dropout Bend Type 2 - 400	400	1,2	0,939	3197395
H100 TLS Side Dropout Bend Type 2 - 500	500	1,2	1,003	3197396
H100 TLS Side Dropout Bend Type 2 - 600	600	1,2	1,066	3197397



TLS Side dropout module type 2 for assembly ;

- 6 Piece Wire Mesh Joint Fitting
- 6 Piece Round Head Bolt M6x20
- 6 Piece Flanged M6.



■ Please contact your representative for inquiries regarding stainless steel alternatives.

■ Please indicate order code in your orders.

■ Please contact us for special dimensions.

■ Material weights may vary by $\pm 10\%$

■ All dimensions are given as in mm

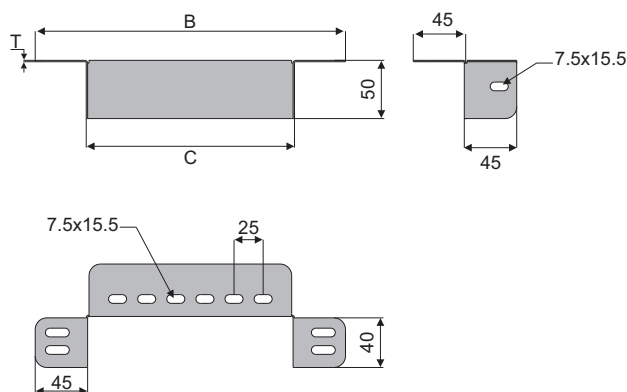
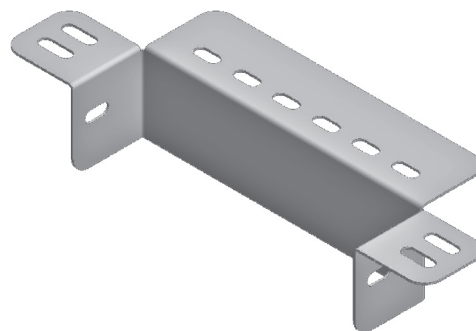
■ EG= Electrogalvanized

■ SS= Stainless Steel

■ PG= Pre-Galvanized

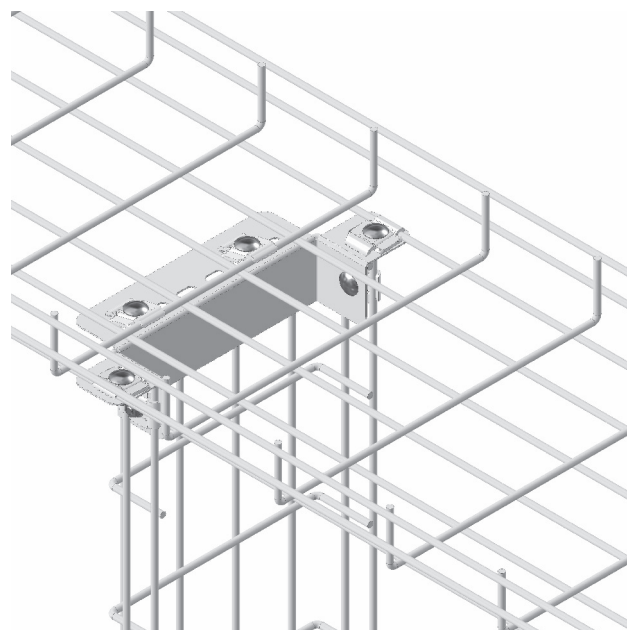
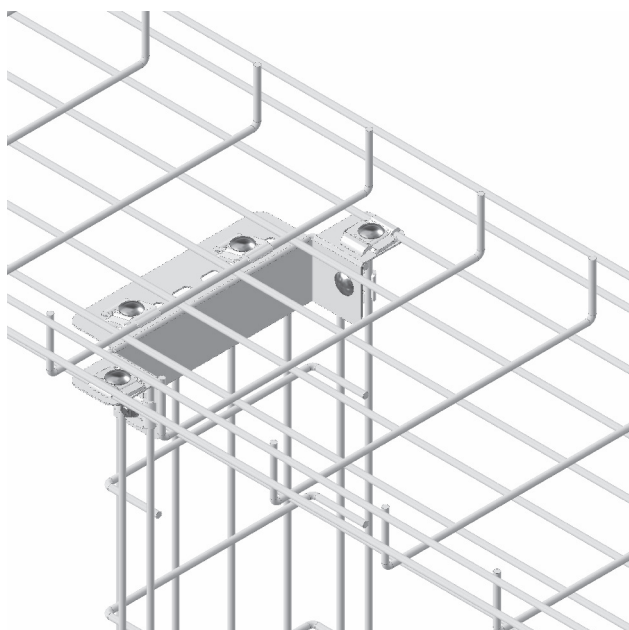
■ HDG= Hot Dip Galvanized

Description	A (mm)	T (mm)	Weight (kg/pcs)	PG Code
H35 TLS Bottom Dropout - 050	50	1,2	0,057	3197398
H35 TLS Bottom Dropout - 100	100	1,2	0,100	3197399
H35 TLS Bottom Dropout - 150	150	1,2	0,142	3197400
H35 TLS Bottom Dropout - 200	200	1,2	0,184	3197401
H35 TLS Bottom Dropout - 250	250	1,2	0,226	3197402
H35 TLS Bottom Dropout - 300	300	1,2	0,268	3197403
H35 TLS Bottom Dropout - 400	400	1,2	0,352	3197404
H35 TLS Bottom Dropout - 500	500	1,2	0,436	3197405
H35 TLS Bottom Dropout - 600	600	1,2	0,520	3197406
H55 TLS Bottom Dropout - 050	50	1,2	0,089	3197407
H55 TLS Bottom Dropout - 100	100	1,2	0,131	3197408
H55 TLS Bottom Dropout - 150	150	1,2	0,173	3197409
H55 TLS Bottom Dropout - 200	200	1,2	0,215	3197410
H55 TLS Bottom Dropout - 250	250	1,2	0,257	3197411
H55 TLS Bottom Dropout - 300	300	1,2	0,299	3197412
H55 TLS Bottom Dropout - 400	400	1,2	0,384	3197413
H55 TLS Bottom Dropout - 500	500	1,2	0,468	3197414
H55 TLS Bottom Dropout - 600	600	1,2	0,552	3197415
H100 TLS Bottom Dropout - 100	100	1,2	0,202	3197416
H100 TLS Bottom Dropout - 150	150	1,2	0,244	3197417
H100 TLS Bottom Dropout - 200	200	1,2	0,286	3197418
H100 TLS Bottom Dropout - 250	250	1,2	0,328	3197419
H100 TLS Bottom Dropout - 300	300	1,2	0,370	3197420
H100 TLS Bottom Dropout - 400	400	1,2	0,454	3197421
H100 TLS Bottom Dropout - 500	500	1,2	0,538	3197422
H100 TLS Bottom Dropout - 600	600	1,2	0,623	3197423



TLS Bottom Dropout for assembly ;

- 6 Piece Wire Mesh Joint Fitting
- 6 Piece Round Head Bolt M6x20
- 6 Piece Flanged M6.



TLS

■ Please contact your representative for inquiries regarding stainless steel alternatives.

■ Please indicate order code in your orders.

■ Please contact us for special dimensions.

■ Material weights may vary by ± 10%

■ All dimensions are given as in mm

■ EG= Electrogalvanized

■ SS= Stainless Steel

■ PG= Pre-Galvanized

■ HDG= Hot Dip Galvanized

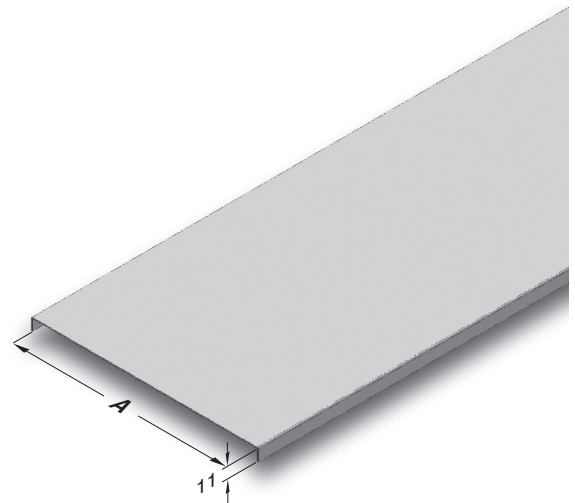
E-LINETLS

COVER

Pre-Galvanized (TS EN 10143)



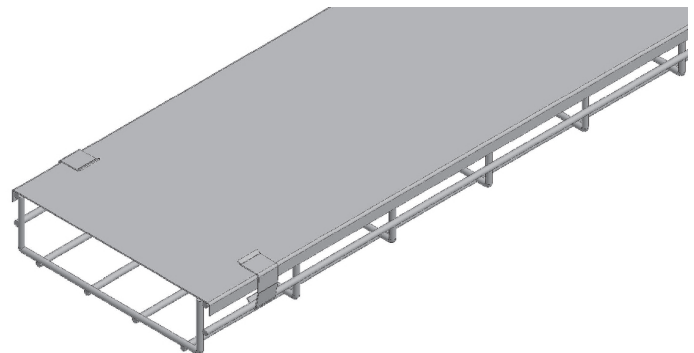
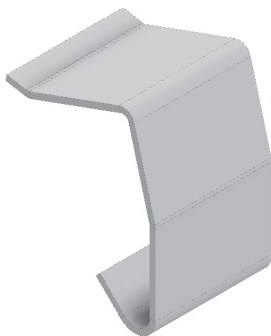
Description	A (mm)	T (mm)	Weight (kg/m)	PG Code
UKK 050	50	0,8	0,448	3008371
UKK 100	100	0,8	0,757	3008370
UKK 150	150	1,0	1,341	3008369
UKK 200	200	1,0	1,735	3008368
UKK 250	250	1,2	2,556	3008367
UKK 300	300	1,2	3,030	3008366
UKK 400	400	1,5	4,970	3008365
UKK 500	500	1,5	6,154	3008364
UKK 600	600	1,5	7,330	3006017



Cover Clamps

Pre-Galvanized (TS EN 10143)

Description	T (mm)	Weight (kg/pcs)	PG Code
H35 TLS COVER CLAMPS	1	0,020	1028449
H55/H100 TLS COVER CLAMPS	1	0,015	1028451



Please order TLS cover clamps to use 2 pieces for each 1 meter length.

■ Please contact your representative for inquiries regarding stainless steel alternatives.

■ Please indicate order code in your orders.

■ Please contact us for special dimensions.

■ Material weights may vary by $\pm 10\%$

■ All dimensions are given as in mm

■ EG= Electrogalvanized

■ SS= Stainless Steel

■ PG= Pre-Galvanized

■ HDG= Hot Dip Galvanized

E-LINETLS

►► WIRE MESH LEVEL ADAPTATION BEND

Pre-Galvanized (TS 10143)



Description	T (mm)	Weight (kg/set)	PG Code
H55/H100 TLS SDE	2	0,864	3200383

1 Piece Level Adaptation Bend ;

- 4 Piece SDE Set,
- 8 Piece Wire Mesh Joint Fitting
- 12 Piece Bolts M6x20
- 12 Piece Nuts M6.



DOWNWARD DESCENT EXAMPLE



UPWARD DESCENT EXAMPLE



TLS

■ Please contact your representative for inquiries regarding stainless steel alternatives.

■ Please indicate order code in your orders.

■ Please contact us for special dimensions.

■ Material weights may vary by $\pm 10\%$

■ All dimensions are given as in mm

■ EG= Electrogalvanized

■ SS= Stainless Steel

■ PG= Pre-Galvanized

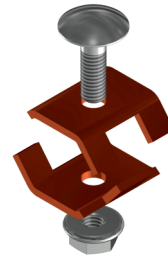
■ HDG= Hot Dip Galvanized

E-LINETLS

►► WIRE MESH TABBED EARTHING CONNECTOR

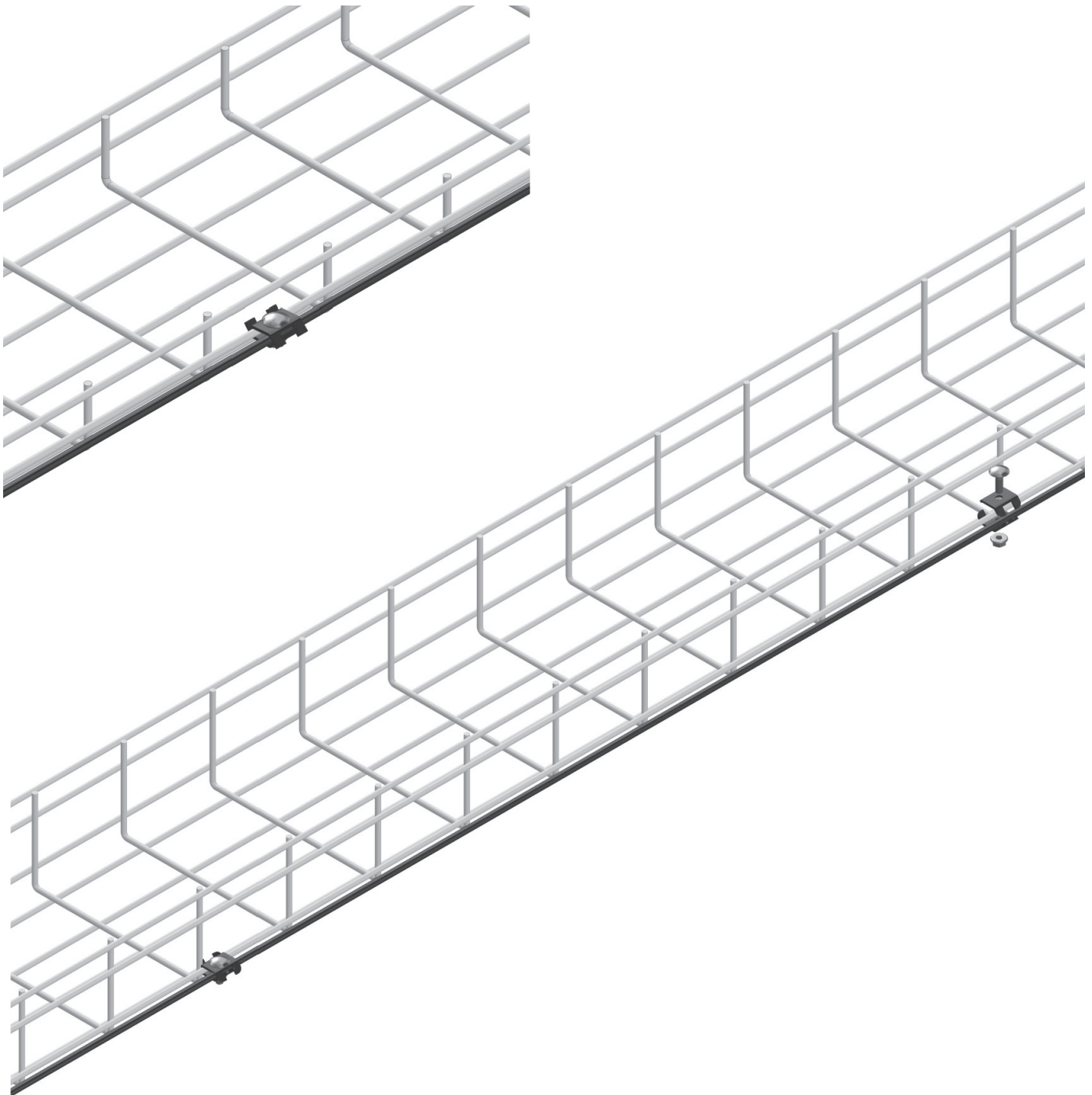


Description	Weight (kg/set)	PG Code
TLS Tabbed Earthing Connector	0,034	3197424



1 Piece Tabbed Earthing Connector for assembly ;

- 2 Piece Tabbed Copper Connector
- 1 Piece Round Head Bolt M6x20
- 1 Piece Flanged M6.



■ Please contact your representative for inquiries regarding stainless steel alternatives.

■ Please indicate order code in your orders.

■ Please contact us for special dimensions.

■ Material weights may vary by $\pm 10\%$

■ All dimensions are given as in mm

■ EG= Electrogalvanized

■ SS= Stainless Steel

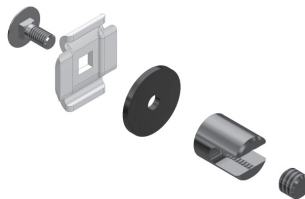
■ PG= Pre-Galvanized

■ HDG= Hot Dip Galvanized

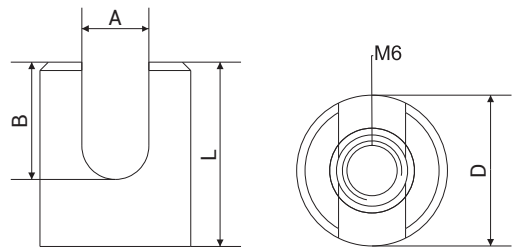
Description	mm ²	A (mm)	B (mm)	D (mm)	L (mm)	PG Code
Brass Joint and Earthing Connector 1	10-35	8	14	18	22	1004225
Brass Joint and Earthing Connector 2	35-70	10	17	21	25	1004226

1 Piece Cylindrical Earthing Connector for assembly ;

- 1 Piece Round Head Bolt M6x12
- 1 Piece Wire Mesh Joint Fitting
- 1 Piece Grounding Washer
- 1 Piece Earthing Connector (Cylindrical)
- 1 Piece Brass Nut.



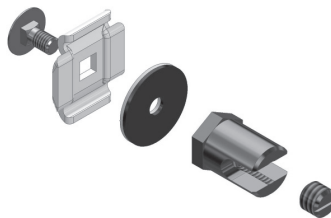
Brass Joint and Earthing Connector (Cylindrical)



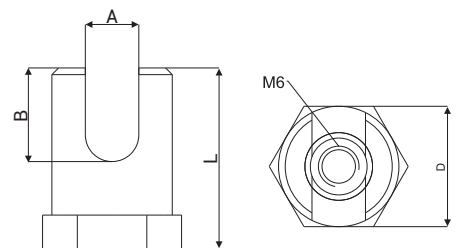
Description	mm ²	A (mm)	B (mm)	D (mm)	L (mm)	PG Code
Brass Joint and Earthing Connector 5	10-35	8	14	18	22	1004229
Brass Joint and Earthing Connector 6	35-70	10	17	21	25	1004230

1 Piece Hexagonal Earthing Connector for assembly ;

- 1 Piece Round Head Bolt M6x12
- 1 Piece Wire Mesh Joint Fitting
- 1 Piece Grounding Washer
- 1 Piece Brass Joint and Earthing Connector(Hexagonal)
- 1 Piece Brass Nut.

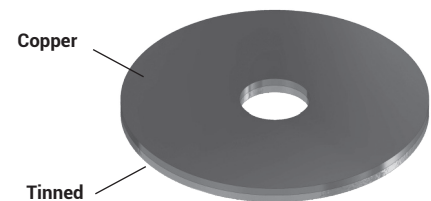
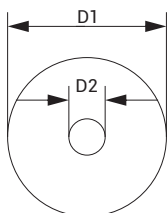


Brass Joint and Earthing Connector (Hexagonal)



Description	D1 (mm)	D2 (mm)	PG Code
Grounding Washer 70-150 mm ²	28	6,4	1015433
Grounding Washer 150-185 mm ²	31	6,4	1015434

“Copper and brass should be used in case of contact between materials and galvanized surfaces.”
 “Tin-coated faces of bimetal materials should be in contact with galvanized surfaces.
 Wrong connection will cause galvanic corrosion.”



■ Please contact your representative for inquiries regarding stainless steel alternatives.

■ Please indicate order code in your orders.

■ Please contact us for special dimensions.

■ Material weights may vary by ± 10%

■ All dimensions are given as in mm

■ EG= Electrogalvanized

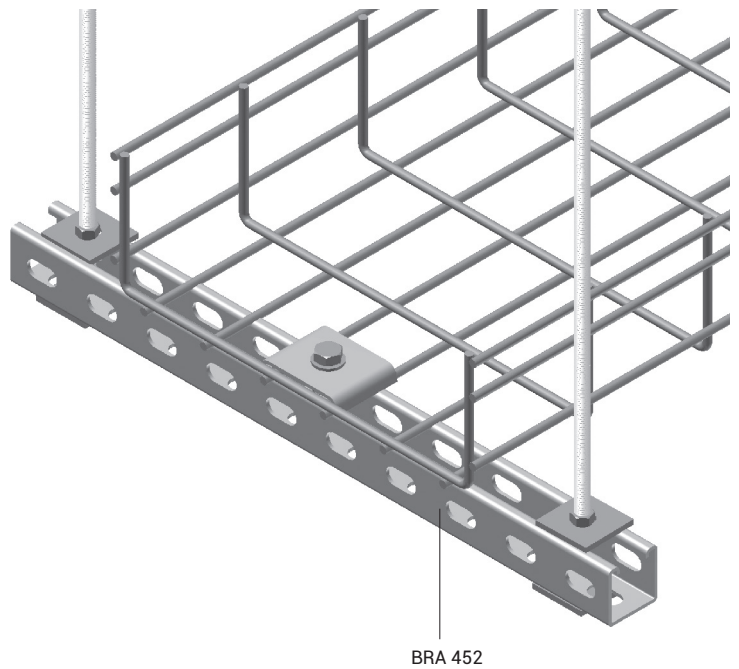
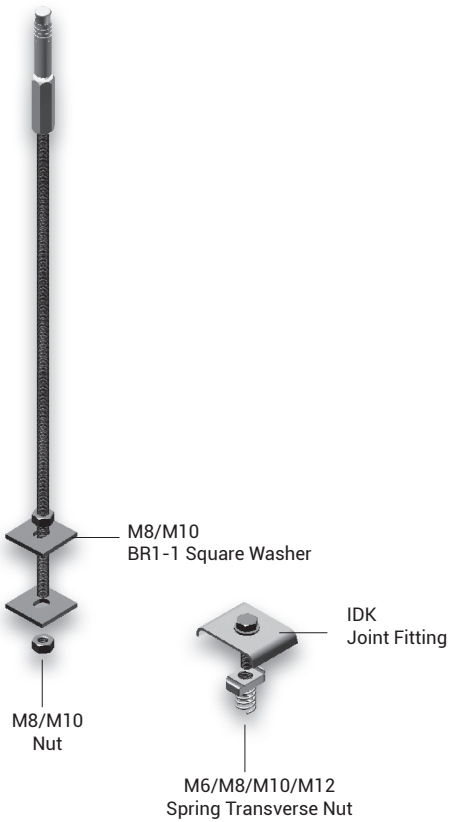
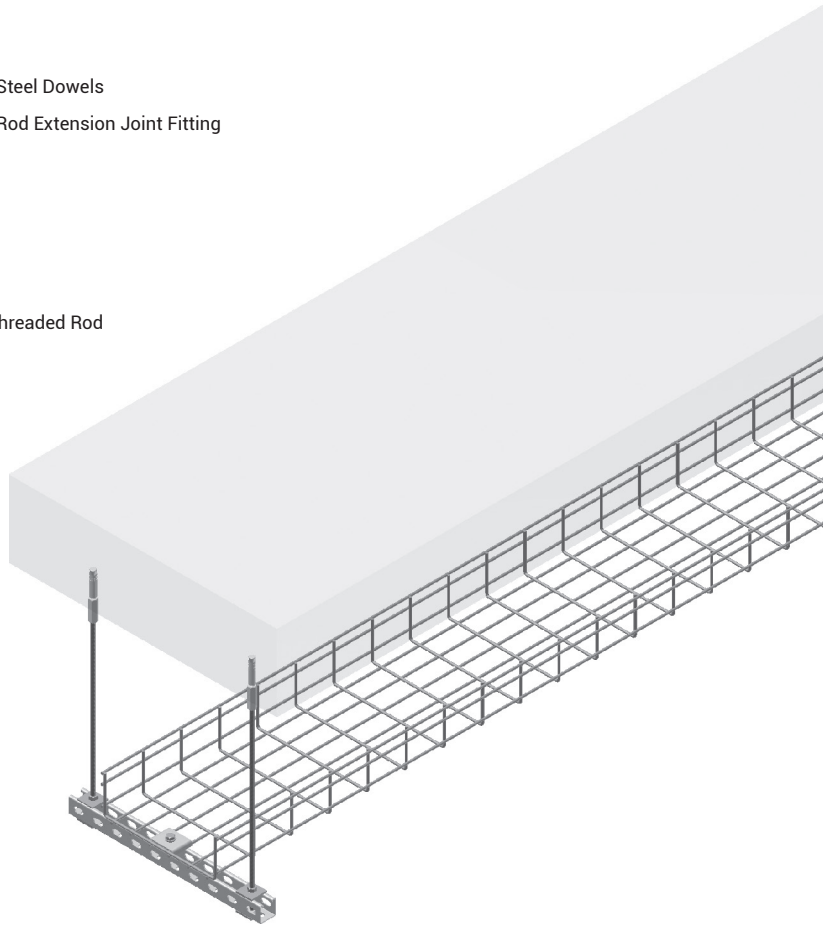
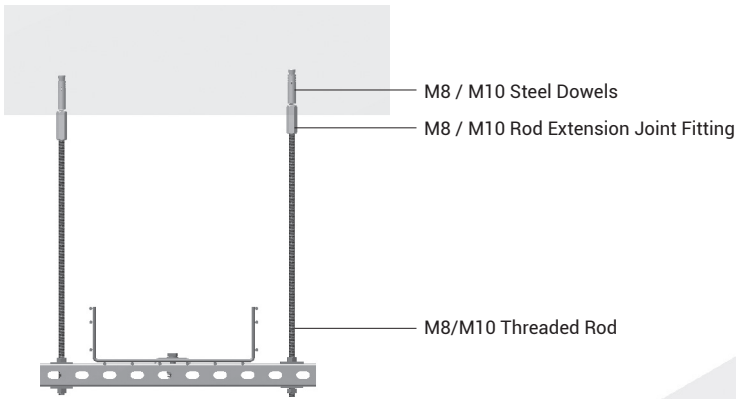
■ SS= Stainless Steel

■ PG= Pre-Galvanized

■ HDG= Hot Dip Galvanized

E-LINETLS

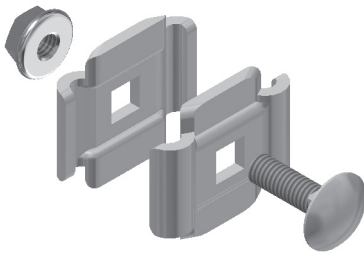
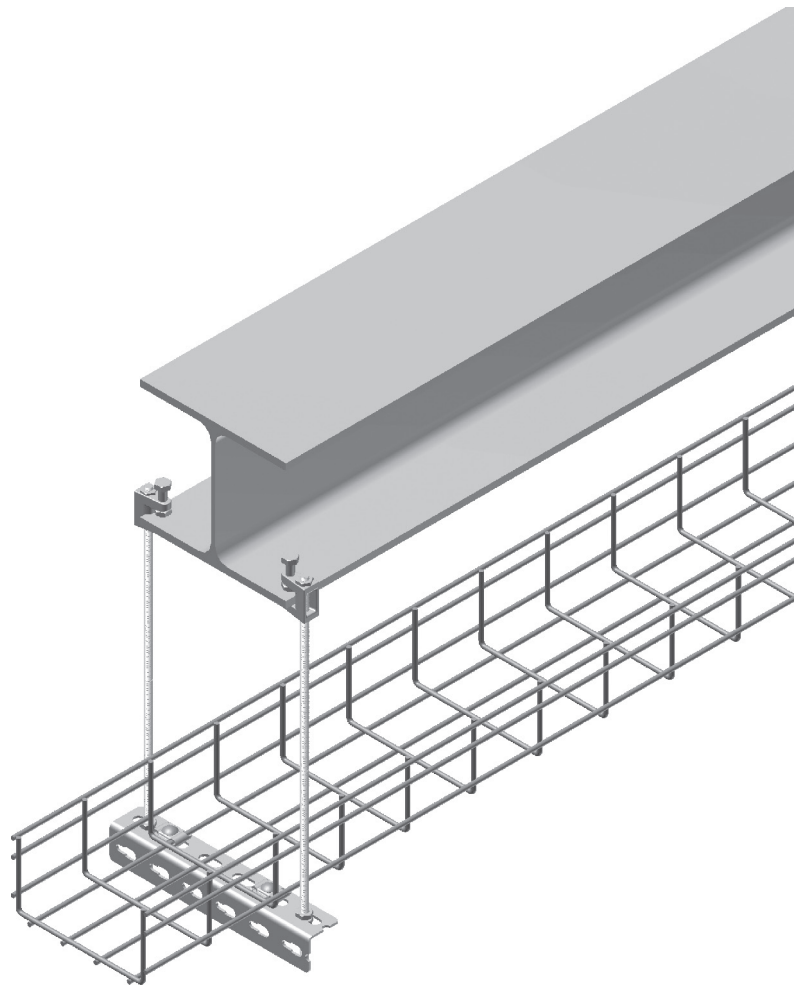
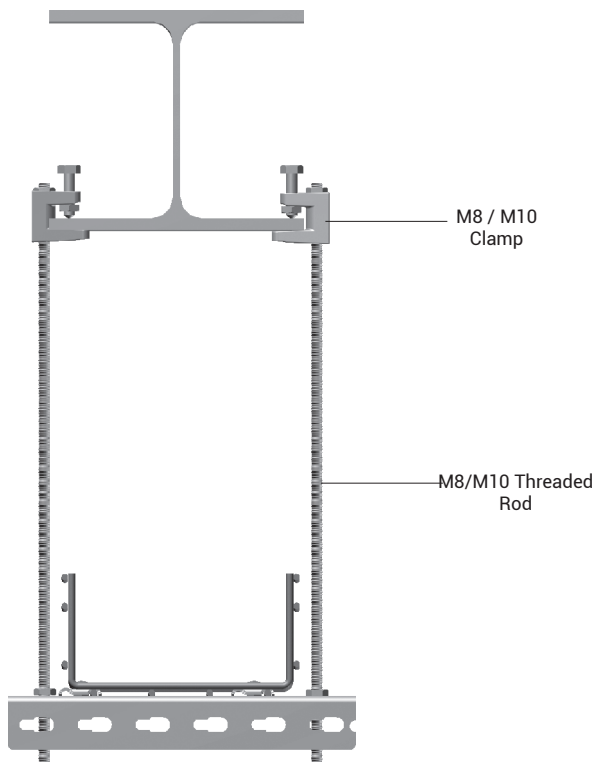
►► APPLICATION EXAMPLES



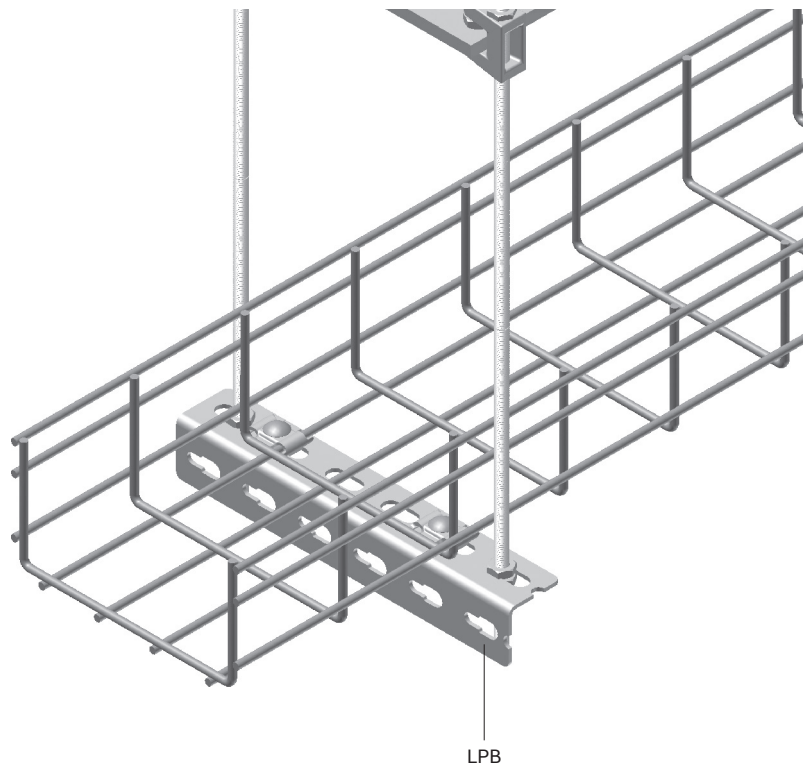
- Please contact your representative for inquiries regarding stainless steel alternatives.
- Please indicate order code in your orders.
- Please contact us for special dimensions.
- Material weights may vary by $\pm 10\%$

■ All dimensions are given as in mm

- EG= Electrogalvanized
- SS= Stainless Steel
- PG= Pre-Galvanized
- HDG= Hot Dip Galvanized



Cable Basket Joint Fitting



■ Please contact your representative for inquiries regarding stainless steel alternatives.

■ Please indicate order code in your orders.

■ Please contact us for special dimensions.

■ Material weights may vary by $\pm 10\%$

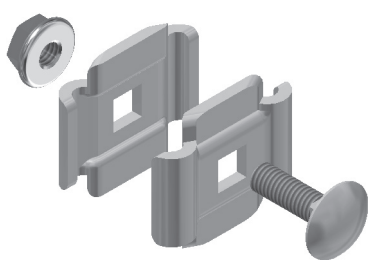
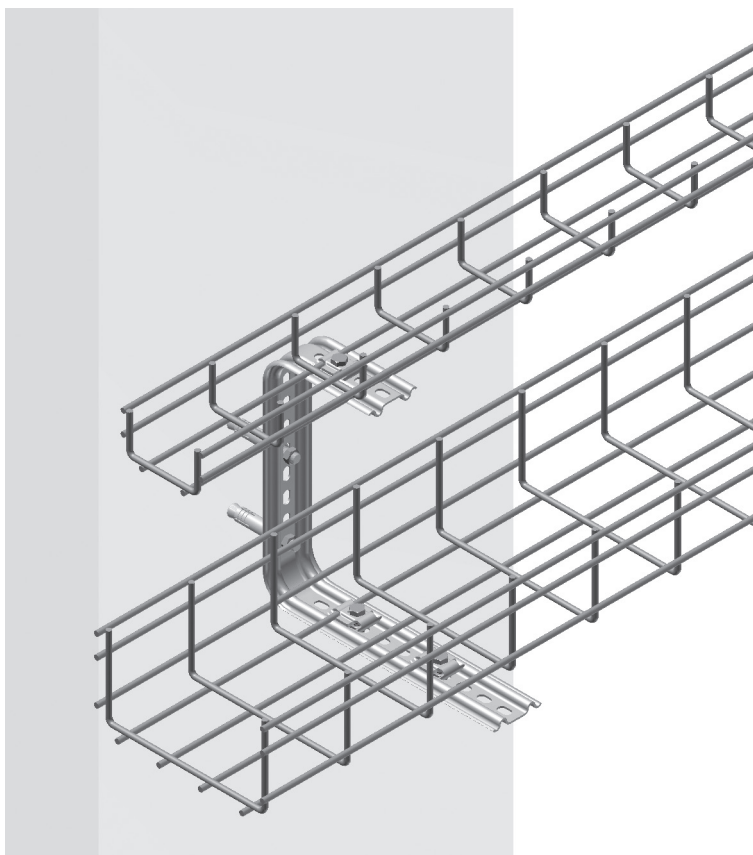
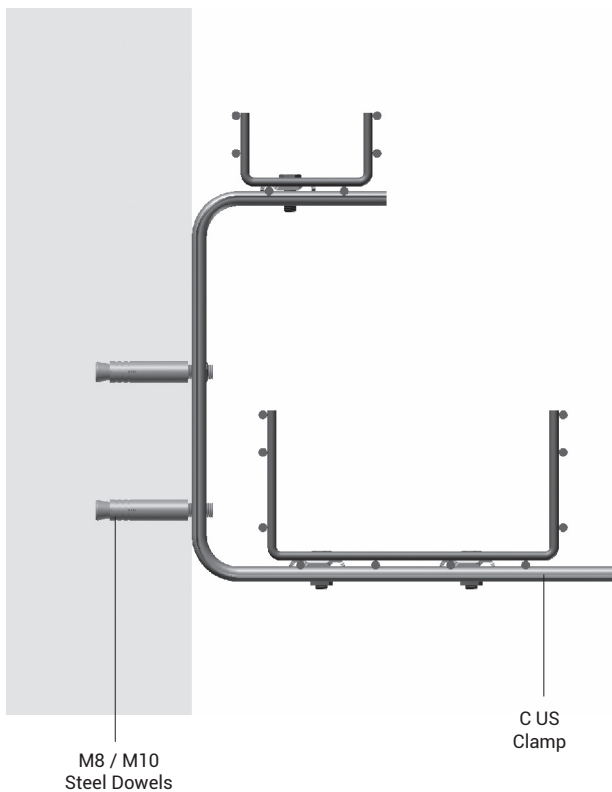
■ All dimensions are given as in mm

■ EG= Electrogalvanized

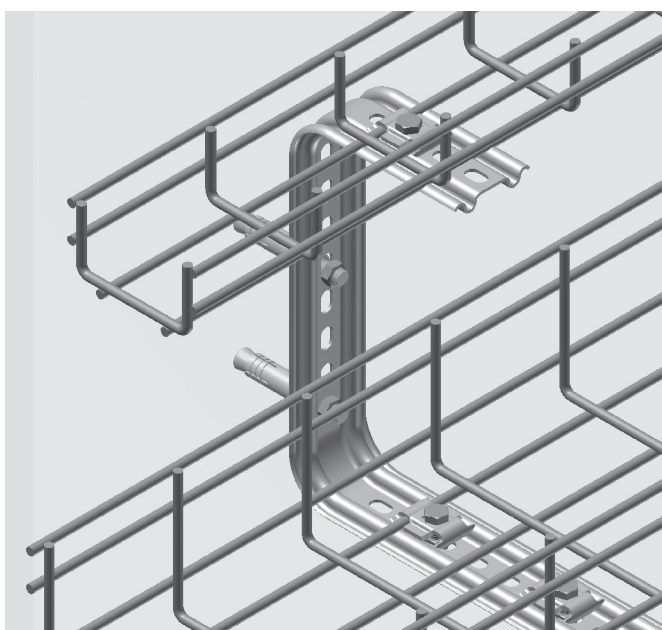
■ SS= Stainless Steel

■ PG= Pre-Galvanized

■ HDG= Hot Dip Galvanized



Cable Basket Joint Fitting



■ Please contact your representative for inquiries regarding stainless steel alternatives.

■ Please indicate order code in your orders.

■ Please contact us for special dimensions.

■ Material weights may vary by $\pm 10\%$

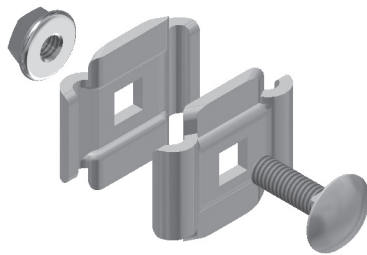
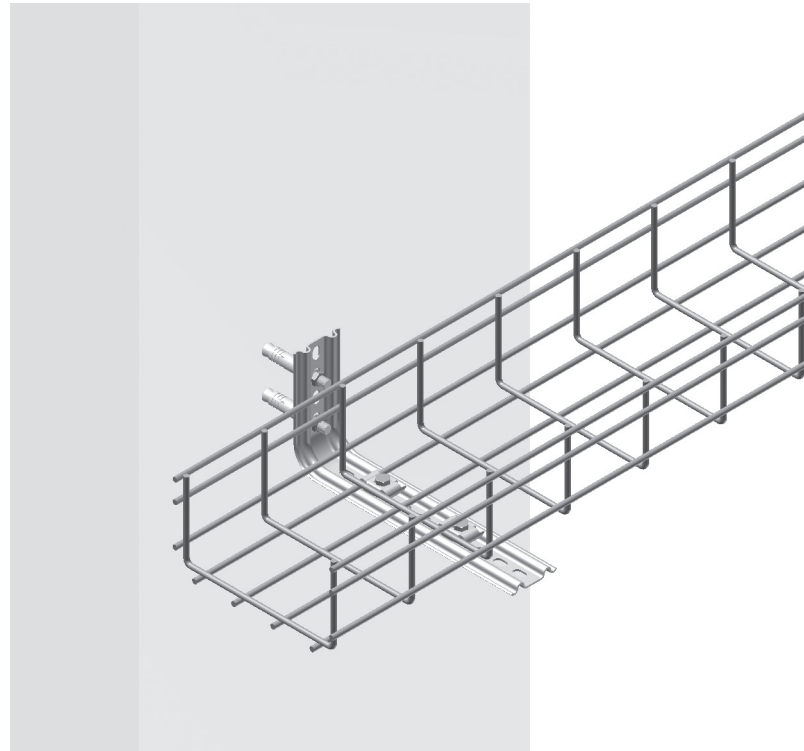
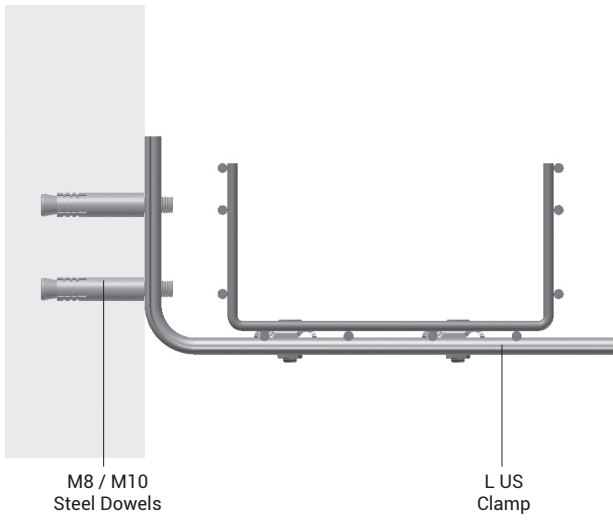
■ All dimensions are given as in mm

■ EG= Electrogalvanized

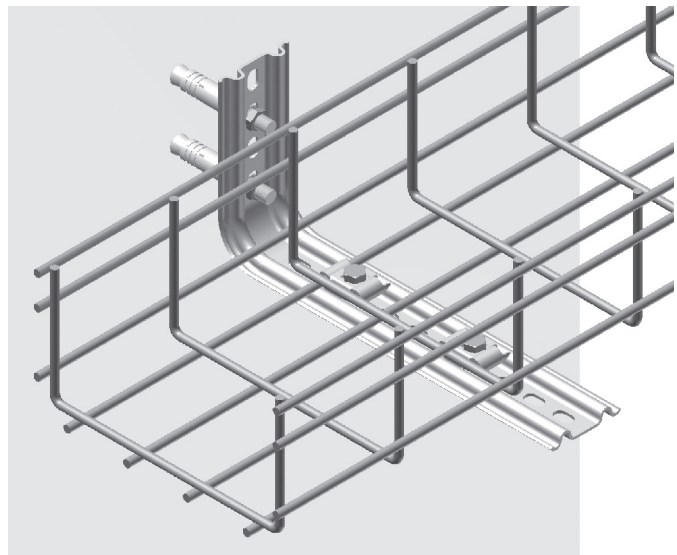
■ SS= Stainless Steel

■ PG= Pre-Galvanized

■ HDG= Hot Dip Galvanized



Cable Basket Joint Fitting



TLS

■ Please contact your representative for inquiries regarding stainless steel alternatives.

■ Please indicate order code in your orders.

■ Please contact us for special dimensions.

■ Material weights may vary by $\pm 10\%$

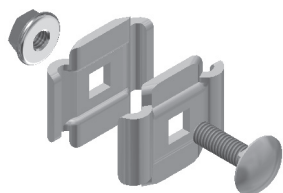
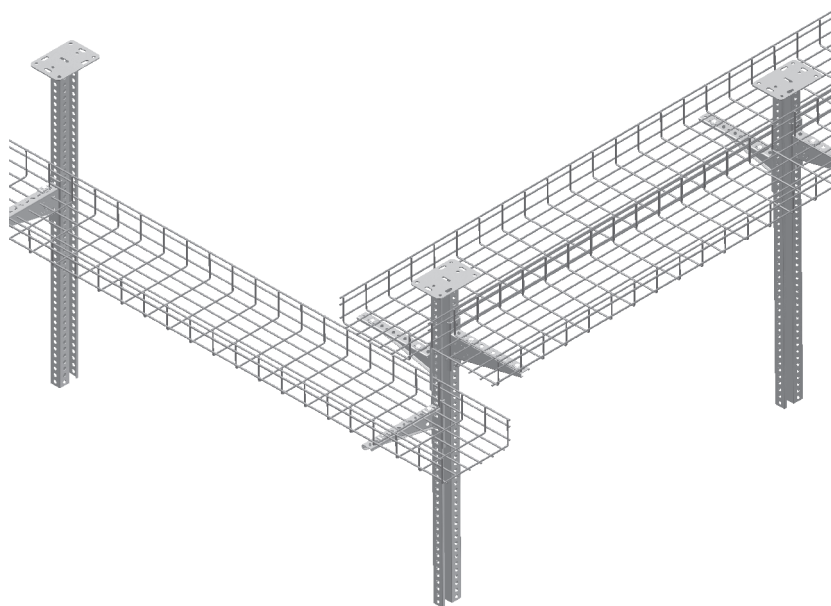
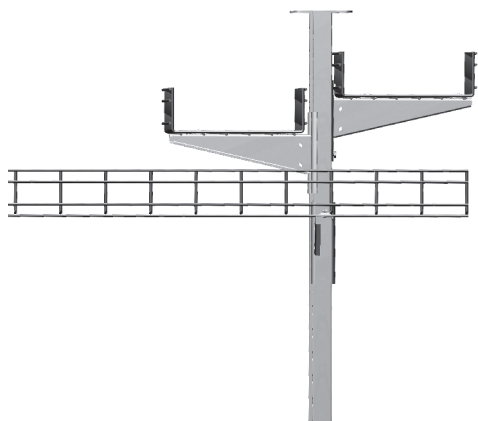
■ All dimensions are given as in mm

■ EG= Electrogalvanized

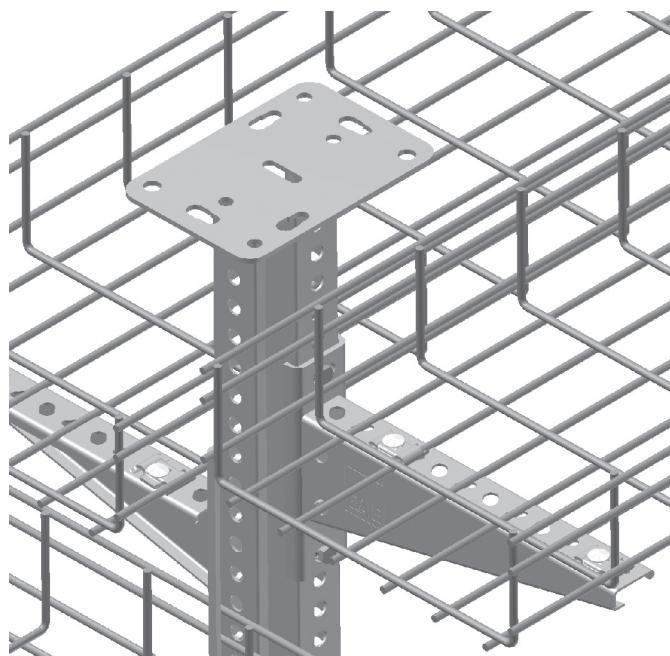
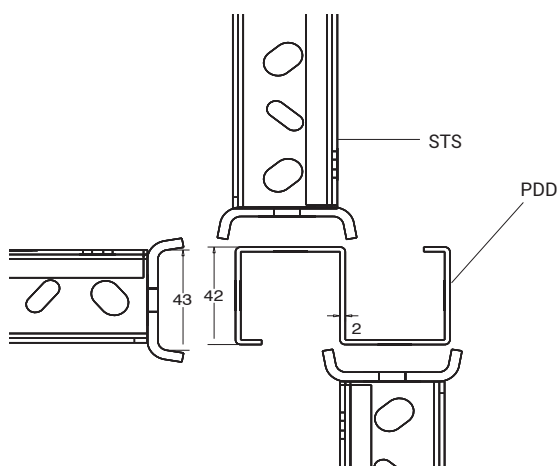
■ SS= Stainless Steel

■ PG= Pre-Galvanized

■ HDG= Hot Dip Galvanized



Cable Basket Joint Fitting



■ Please contact your representative for inquiries regarding stainless steel alternatives.

■ Please indicate order code in your orders.

■ Please contact us for special dimensions.

■ Material weights may vary by $\pm 10\%$

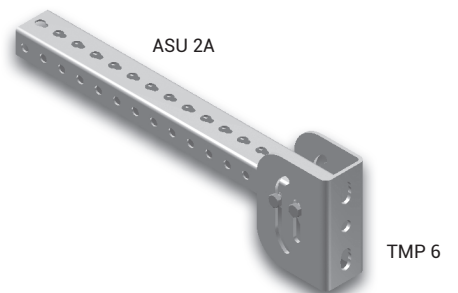
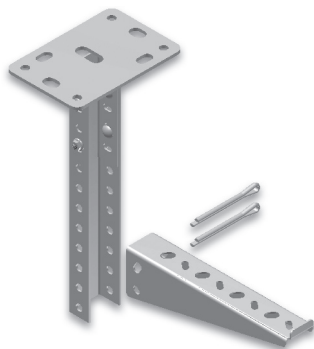
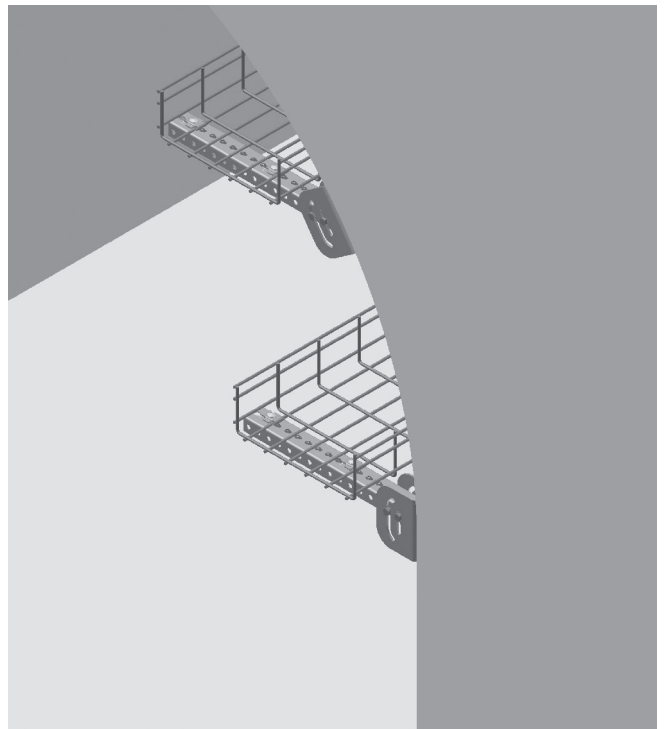
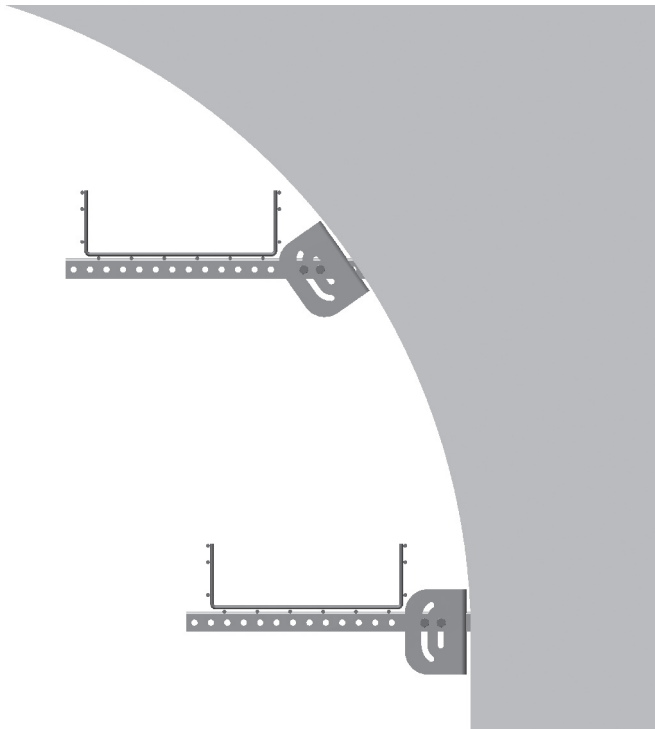
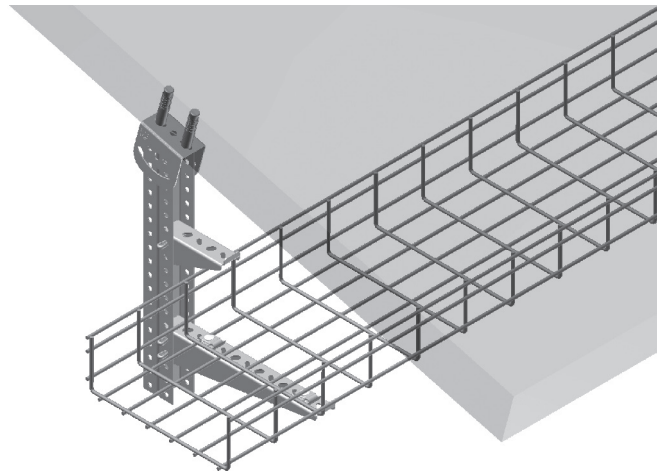
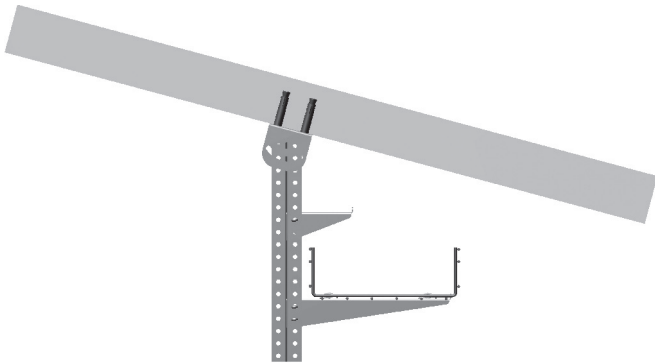
■ All dimensions are given as in mm

■ EG= Electrogalvanized

■ SS= Stainless Steel

■ PG= Pre-Galvanized

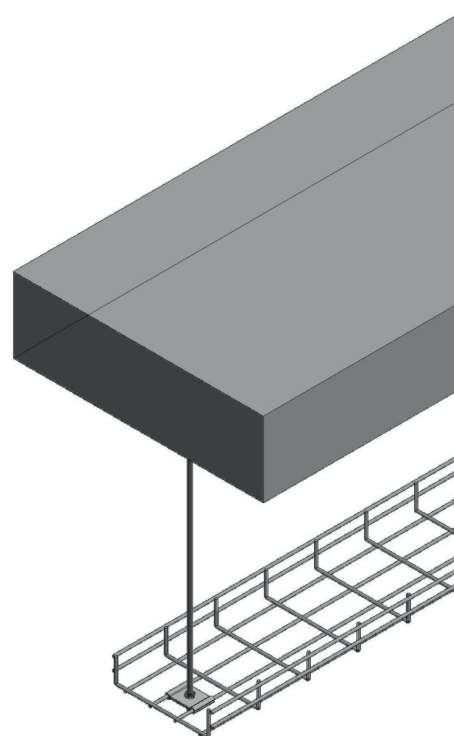
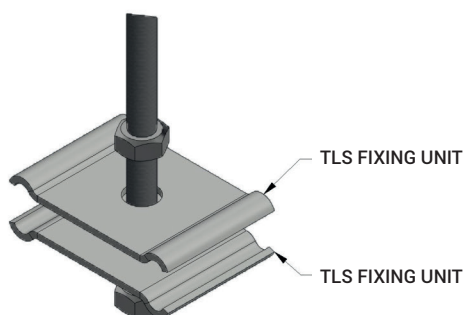
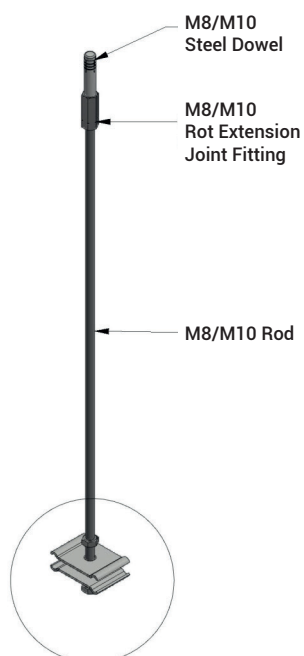
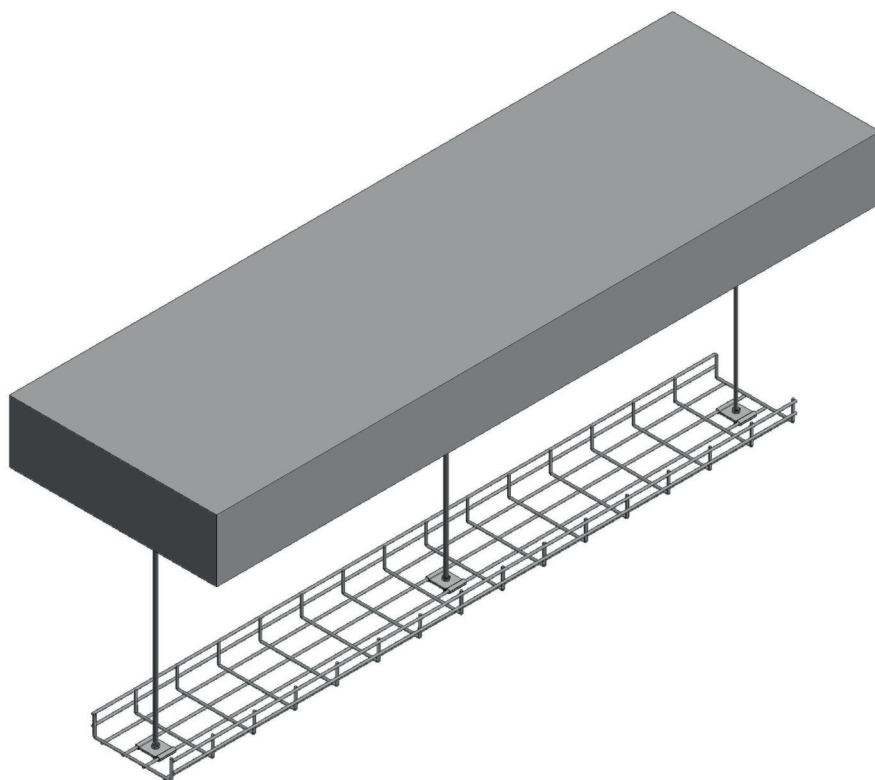
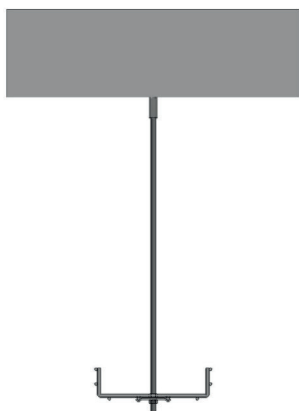
■ HDG= Hot Dip Galvanized



- Please contact your representative for inquiries regarding stainless steel alternatives.
- Please indicate order code in your orders.
- Please contact us for special dimensions.
- Material weights may vary by $\pm 10\%$

■ All dimensions are given as in mm

- EG= Electrogalvanized
- SS= Stainless Steel
- PG= Pre-Galvanized
- HDG= Hot Dip Galvanized



■ Please contact your representative for inquiries regarding stainless steel alternatives.

■ Please indicate order code in your orders.

■ Please contact us for special dimensions.

■ Material weights may vary by $\pm 10\%$

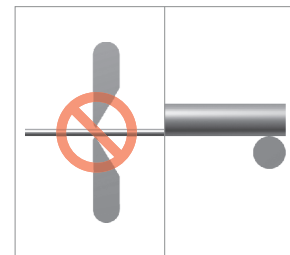
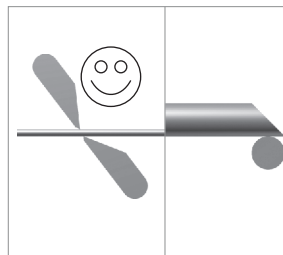
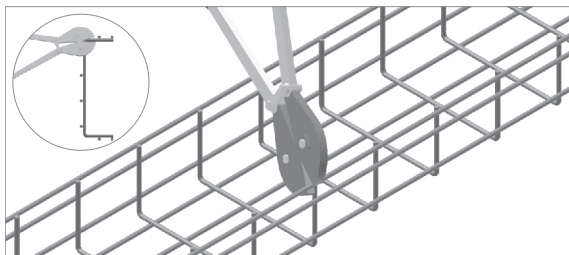
■ All dimensions are given as in mm

■ EG= Electrogalvanized

■ SS= Stainless Steel

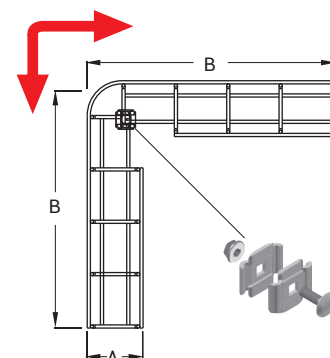
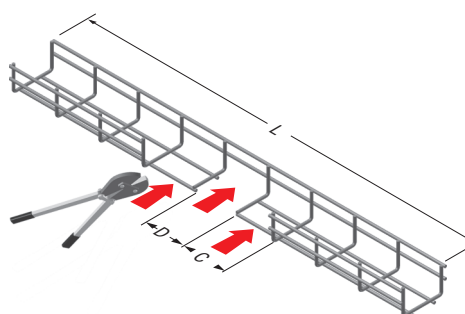
■ PG= Pre-Galvanized

■ HDG= Hot Dip Galvanized



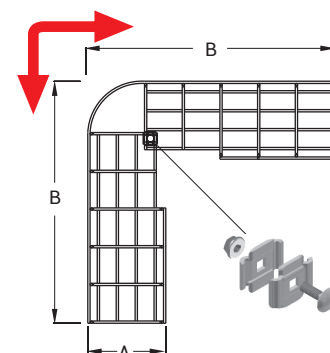
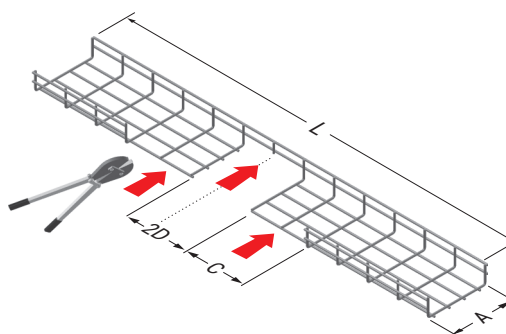
A (mm)	B (mm)	C (mm)	L (mm)	Cable Tray Joint Fitting
100	300	100	900	1
150	400	6,4	900	1

For 100-150 baskets, the middle section should be cut as one (D) piece.



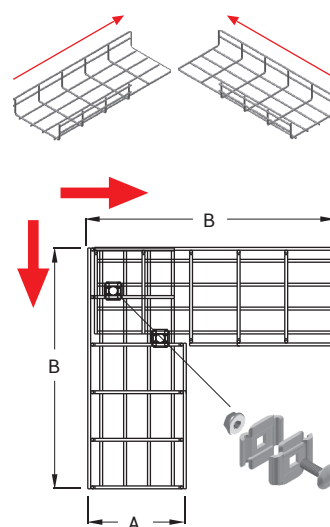
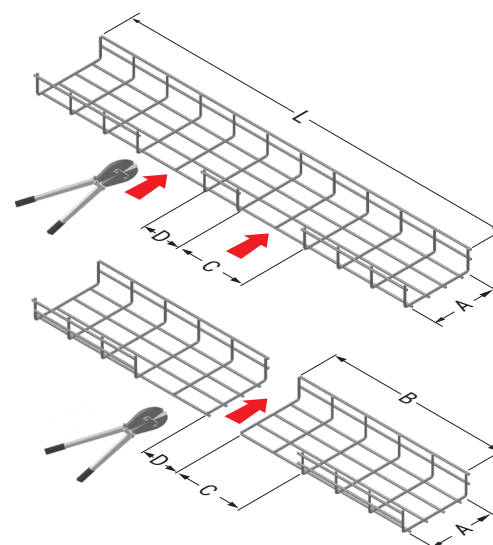
A (mm)	B (mm)	C (mm)	L (mm)	Cable Tray Joint Fitting
200	500	200	1000	2
250	500	200	1000	2
300	600	300	1200	2
400	700	400	1400	4
500	800	500	1600	4
600	900	600	1800	6

For 200-600 baskets, the middle section should be cut into 2(2D) pieces.



A (mm)	B (mm)	C (mm)	L (mm)	Cable Tray Joint Fitting
100	300	100	700	1
150	400	200	900	1
200	500	200	1100	2
250	500	200	1100	2
300	600	300	1300	2
400	700	400	1500	4
500	800	500	1700	4
600	900	600	1900	6

For 100-600 baskets, the middle section should be cut as one (D) piece.



■ Please contact your representative for inquiries regarding stainless steel alternatives.

■ Please indicate order code in your orders.

■ Please contact us for special dimensions.

■ Material weights may vary by ± 10%

■ All dimensions are given as in mm

■ EG= Electrogalvanized

■ PG= Pre-Galvanized

■ SS= Stainless Steel

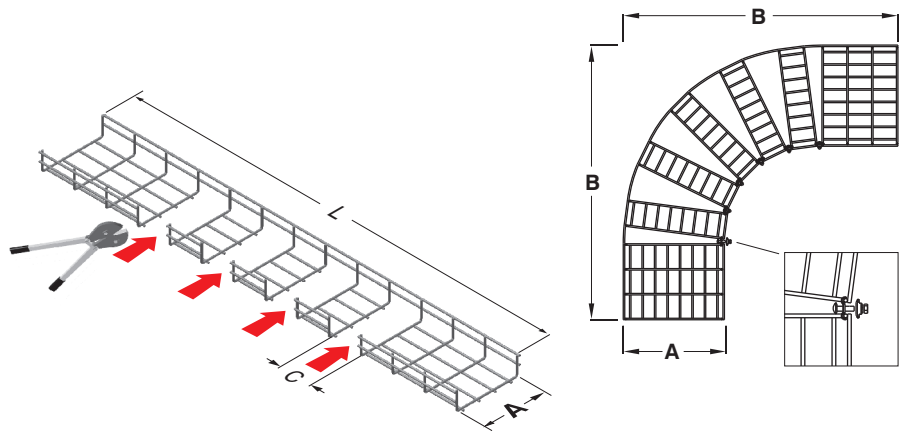
■ HDG= Hot Dip Galvanized

E-LINETLS

►► YD BEND APPLICATION EXAMPLES

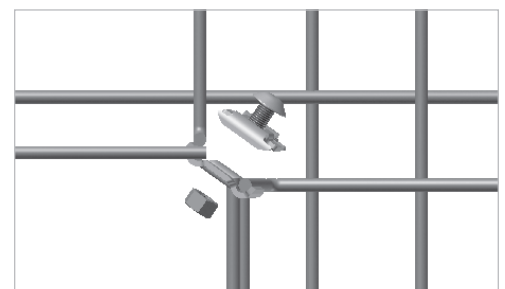
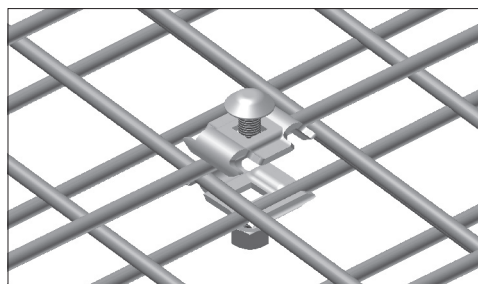
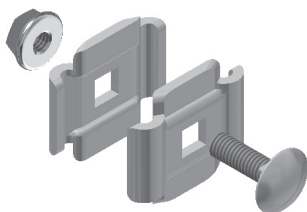
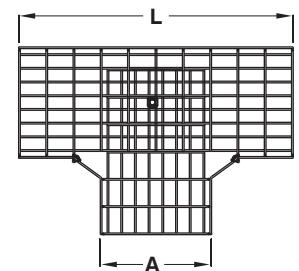
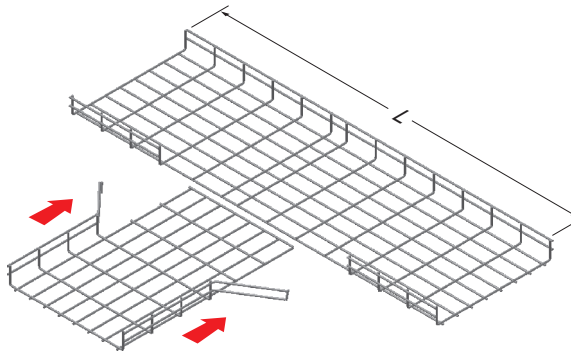
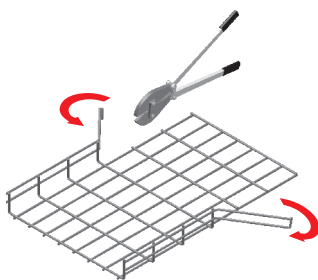
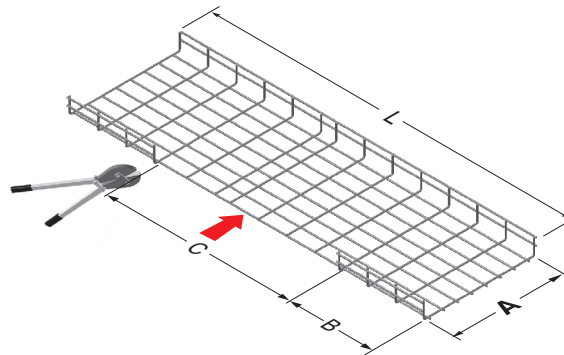


A (mm)	B (mm)	C (mm)	L (mm)	Cable Tray Joint Fitting
100	520	3	900	1
150	620	4	1100	1
200	660	4	1100	2
250	910	6	1520	2
300	910	6	1520	4
400	1140	8	1900	6
500	1400	9	2100	9
600	1520	11	2500	9



► "T" BEND APPLICATION EXAMPLES

A (mm)	B (mm)	C (mm)	L (mm)	Cable Tray Joint Fitting
100	300	300	800	3
150	300	350	900	3
200	300	400	1000	3
250	300	400	1000	3
300	300	500	1100	4
400	300	600	1200	4
500	300	700	1300	6
600	300	800	1400	6



■ Please contact your representative for inquiries regarding stainless steel alternatives.

■ Please indicate order code in your orders.

■ Please contact us for special dimensions.

■ Material weights may vary by ± 10%

■ All dimensions are given as in mm

■ EG= Electrogalvanized

■ PG= Pre-Galvanized

■ SS= Stainless Steel

■ HDG= Hot Dip Galvanized